



North America Local Program Guide

Revised January 2022

Special Olympics

West Virginia



Table of Contents

A Letter from our CEO	6
Introduction	7
What is a Local Program and what purpose does it serve?	7
What does a Local Program Director need to know?	8
Glossary of Terms	9
Acronyms	11
Part 1: Quick Start Guide to Local Program Management	12
Section 1: Overview	12
Mission & Vision	12
Special Olympics Philosophy	12
Goal	12
Constituents	13
Athletes	13
Participants	13
Unified Sports Partners	13
Families – Parents & Siblings	13
Volunteers	13
Sports	13
Support Structure	14
Special Olympics, Inc.	14
Special Olympics North America	14
Special Olympics West Virginia	14
Sub-Program	14
Local Program	15
Donor/Sponsor	15
Section 2: Management Team	16
Who do you recruit as Management Team members?	16
Dividing Responsibilities Among Management Team Members	16
What areas will the Management Team focus on?	16
Local Program Coordinators Shape the Management Team	17
How is the Management Team shaped?	17
Section 3: Functions	19
Registration & Data: Overview	19
Athletes	19
Unified Sports Partners	19
Volunteers	20
Disqualifiers	21
Submitting Volunteer Registration	21
Eligibility Statement	21
General Statement	21
Age Requirement	21
Identifying a Person with an Intellectual Disability	21

Families	22
Working with Agency/Provider Staff & Volunteers	22
Planning & Meetings	23
Short-Term Planning	23
Medium-Term Planning	23
Long-Term Planning	23
Local Program Meetings	24
Sample Agenda for a Local Program Management Team Meeting	24
Risk Management: Health & Safety	25
Sports Training & Competition	25
Incident Reporting	25
Insurance	26
Communications & Marketing	26
Planned Communication / Engagement	26
Language Guidelines	28
Branding	28
Uniforms	28
Sports: Training & Competition	30
Sports	31
Summer Sports	31
Winter Sports	31
Recognized Sports	31
Locally Popular Sports	31
Sports Rules	32
Special Olympics Unified Sports®	32
Sports Training & Practice	33
Levels of Competition	33
Criteria for Advancement	34
Other Sport Opportunities	34
Motor Activities Training Program (MATP)	34
Individual Skills and Modified Lead-Up Skills	34
Special Olympics Young Athletes	35
Recruitment & Training	35
Volunteers	35
Coaches	37
Courses for Continuing Education	38
Athlete Growth	39
Fundraising	40
Additional Fundraising Considerations	40
Finance	42
Oversee & Manage Financial Resources	42
Additional Financial Considerations	43
Athlete Leadership in Action	44
What is Athlete Leadership?	45

Part 2: Further Developing Your Local Program	45
Section 1: How to Grow & Sustain Your Local Program	45
Planning for Growth	45
Enhancing Existing Sports	45
Adding Unified Sports Options to Already Existing Sports	45
Adding New Sports	45
Determining What Opportunities to Offer	46
Young Athletes	46
Special Olympics Unified Champion Schools®	47
Athlete Leadership	47
Youth Activation	47
Health	47
Special Olympics Healthy Athletes®	47
Section 2: Developing Partnerships	50
What is a successful partnership approach for Local Program development?	50
Prospects	50
Identify Potential Prospects	50
Discover the Key Contact: Gatekeeper vs. Decision-Maker	50
Network Everywhere	50
Get in the Door	50
Persistence Pays Off*	51
The Pitch	52
Partnerships with Families	54
Section 3: Using Technology	55
Volunteer Management	55
Games Management	55
Communications & Marketing	55
Social Media	55
Other Means of Using Technology	57
Part 3: Resources	59
Sample Checklists, Tools, and Best Practices	59
Local Program Management Team Position Descriptions	60
Local Program Coordinator	60
Sports & Competition Coordinator	60
Administrative/Operations Coordinator	60
Finance Coordinator	60
Fundraising Coordinator	60
Outreach Coordinator	60
Communications Coordinator	60
Volunteer Coordinator	61
Unified Champion School Coordinator	61
Athlete Leadership Coordinator	61
Young Athletes™ Coordinator	61
Athlete Representative	61
Family Services Coordinator	61

Wellness/Fitness Coordinator	61
Local Program Management Team Training Checklist	62
All Positions	62
Local Program Coordinator Assistant Local Program Coordinator	62
Sports	63
Volunteers	64
Medicals (Applications for Participation)	64
Fundraising	65
Communications	65
Sport Training & Competition Checklists	66
Checklist for Training Sites	66
Competition – Outdoor Events Checklist	67
Competition – Indoor Events Checklist	68
Codes of Conduct	70
Special Olympics Athlete Code of Conduct	70
Special Olympics Coach Code of Conduct	71
Ensure A Positive Experience	71
Act Professionally and Take Responsibility for My Actions	71
Quality Service to The Athletes	71
Special Olympics Family Member Code of Conduct	72
Developing an Emergency Management Plan	74
Considerations	74
Each coach is responsible for activating an Emergency Management Plan	74
Crisis Communication Plan	74
Incident Immediate Action Steps Guide	76
Inclement Weather Policies	78
Rain Policy	78
Winter Weather Policy	78
Hot Weather Policy	78
Thunder & Lightning Policy	78



A Letter from our CEO

On behalf of Special Olympics West Virginia, I am pleased to provide our Special Olympics **Local Program Guide**. This guide is a resource for Local Program leadership, providing the necessary information and tools to manage the Special Olympics program in each West Virginia local community.

Local Program leadership is critical to the successful organization of Special Olympics programs at the grassroots level. This is the foundation of our worldwide movement and the starting point for each athlete's participation.

This guide includes:

- **Part 1:** A Quick Start Guide to Developing a Local Program
- **Part 2:** Growing & Sustaining a Local Program
- **Part 3:** Resources

The Local Program Guide can serve as a tool to engage new Local Program leadership, providing the Local Coordinator with information and tools necessary to build a foundation for the Local Program. Parts 2 and 3 provide the next level of resources to grow the Local Program by offering new and expanded opportunities.

Our staff are here to offer additional guidance and support as you work tirelessly to engage athletes in local sports training and competition opportunities. You can reach us at any time at 304.345.9310.

Thank you for your commitment to our athletes and the Special Olympics movement.

John Corbett
CEO

Special Olympics West Virginia



Introduction

What is a Local Program and what purpose does it serve?

The Local Program is the direct service unit for athletes and their family members within a larger Special Olympics Program, i.e., *Special Olympics West Virginia*. The Local Program engages with the public to provide sports training, competition opportunities, and related activities. Through sports, Special Olympics creates inclusive communities where all people respect one another and work together for the greater good. A Local Program may originate out of existing independent Special Olympics clubs, public or specialized schools, colleges or universities, independent living facilities, Parks and Recreation Departments, adult service providers, professional sports clubs, geographic communities, counties, or other training groups that include registered Special Olympics athletes.

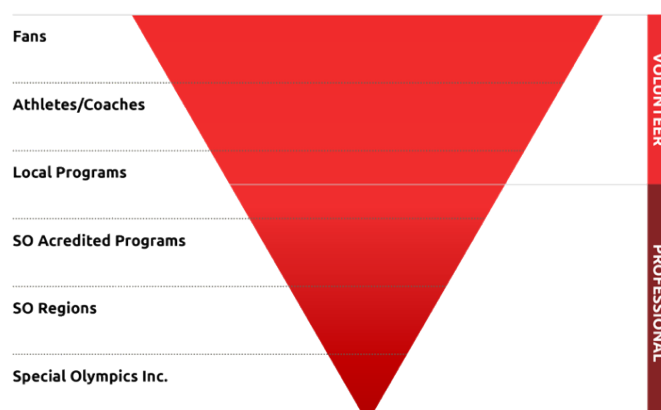
Each Local Program offers official Special Olympics sports training and competition opportunities for athletes (individuals with intellectual disabilities) and Special Olympics Unified Sports® partners (individuals without intellectual disabilities). Through sports, Special Olympics also creates ongoing opportunities for physical activity and socialization, fostering greater athlete involvement and satisfaction – which are critical to Special Olympics’ growth.

While everyone in the Special Olympics global movement plays a vital role, the importance of the Local Program level of the organization cannot be emphasized enough. It is at the grassroots level of the movement that most people engage with Special Olympics. This grassroots level is where fans cheer on their family, friends, and neighbors who compete, and it is where communities of inclusion are built.

Special Olympics Local Programs’ “inverted pyramid” (shown below) approach acknowledges Local Programs as leaders and champions. The Local Program provides an empowering experience for Special Olympics athletes, Unified Sports partners, families, volunteers, supporters, and fans. The Local Program makes the first impression about this movement.

The conduct of the Local Program can either enhance or hurt the Special Olympics brand. When someone calls to learn more, sign up, donate, or volunteer, did they receive a call back in a timely manner? At local Games, did the venue convey that these are authentic sports teams and is the competition taken seriously? Were athletes competing in uniforms, or were they wearing inappropriate competition apparel? All of these things help shape the perception of Special Olympics and Local Programs.

Take pride in your Local Program by building a team of leaders who share the Special Olympics vision of excellence. This guide is intended to help empower and educate volunteers and staff – critical local leaders – so that quality Local Programs can be developed in all communities.



Local Program Coordinator

The first step is to identify a Local Program Coordinator who will lead and oversee essential programming, including building a Management Team of volunteers who will help manage crucial areas. In order to provide support to Local Program Directors, the Accredited Special Olympics Program, Special Olympics West Virginia, serves as the parent program, providing individual Local Programs with relevant and appropriate guidance, information, resources, policies, and procedures.

In essence, this guide will serve as the framework for each Local Program, which can then be tailored based on the needs, structure, and policies of individual Local Programs. This guide has 3 sections covering crucial information for the success of your Local Program:

- **Part 1:** A Quick Start Guide to Developing a Local Program
- **Part 2:** Growing & Sustaining a Local Program
- **Part 3:** Resources

What does a Local Program Coordinator need to know?

The Local Program Coordinator is **never alone**. By building a **MANAGEMENT TEAM** of volunteers, all of the following tasks can be shared and made more manageable:

- Athlete recruitment, registration, and tracking of medical forms
- Unified Sports partner recruitment, registration, and tracking
- Coach recruitment, education, and tracking
 - Education includes ensuring that coaches are properly trained and certified
- Volunteer recruitment, tracking, and processing Class A Volunteer forms
 - This includes General Orientation and Protective Behaviors with the additional mandatory Concussion Training for coaches
- Competition, training, and Athlete Leadership
- Branding (including use of logo)
- Communications with athletes, families, Unified Sports partners, care providers, volunteers, and general public
- Health and safety; risk management
- Fundraising, including compliance at all levels
- Finance, including compliance at all levels

In addition to the functions listed above, **the Local Program Coordinator** is expected to **engage** key volunteers to assist with the following:

- Compliance with all Special Olympics, Inc. (SOI) and Special Olympics West Virginia policies, rules, and practices
- Ensure that only athletes with valid medical forms and volunteers with valid Class A forms are allowed to participate and be in direct contact with the athletes
- Athlete training, including ensuring that there are enough trained coaches
- Safe, secure, and appropriate training facilities
- Ensure that proper procedures are followed for insurance and signing contracts
- Develop partnerships to effectively run the program
- Ensure athletes have access to proper sports equipment
- Registration and arranging participation in higher-level competitions

- (This includes establishing that there are chaperones, transportation arrangement, and lodging available)
- Transportation to competitions
- Lodging at competitions

Glossary of Terms

- **Accreditation:** Method of assuring that every Program meets the essential core requirements of the Special Olympics mission, as well as certain management and financial requirements. Accreditation grants the Program the legal right to use the Special Olympics name, logo, and other trademarks within its jurisdiction to conduct Special Olympics sports and related activities, and to raise funds under the Special Olympics name.
- **Area or Sub-Program Games:** Preliminary competitions that take place before Special Olympics West Virginia events. These serve as additional competitive opportunities for athletes, as well as provide information that is used to ensure that athletes have an opportunity to compete at an appropriate level according to their ability. Commonly referred to as county Spring Games.
- **Athlete:** A person who is identified as having an intellectual disability who is at least 8 years of age and registers to participate in accordance with the SOI General Rules. This individual trains in an Official Sport or Recognized Sport for a minimum of eight weeks or longer during the calendar year and competes in local, state, or other Special Olympics competitions, or participates in a Motor Activities Training Program. Children between the ages of 2 and 7 can participate in the Young Athletes Program.
- **Athlete Input Council:** A committee comprised of athletes whose purpose is to facilitate discussion among athletes and pass along their suggestions to improve the program.
- **Athlete Medical Form:** Contains pertinent athlete information, including emergency contacts and medical conditions. This form must be completed by a medical examiner before participation in Special Olympics. This form is also known as the Participation Form (APF), and is due every three years.
- **Athlete Release Form:** Each athlete is required to submit a signed consent form to participate in Special Olympics.
- **Class A Volunteer:** Any person who volunteers for a Special Olympics West Virginia Program as a coach, chaperone, driver, overnight host, Unified Sports partner, or otherwise in a manner that results in regular close contact with Special Olympics athletes. Class A Volunteers also include those who assume administrative or financial duties such as Local Coordinators, Committee Members, Event Directors, or Board Members.
- **Class B Volunteer:** Any person who volunteers at a single event; One-day, or walk-on volunteers who do not have direct responsibility or close ongoing contact with athletes.
- **Coach:** Individual charged with training athletes in a specific sport.
- **Division:** The competitive grouping of three to eight athletes in a particular sport based on age, gender, and ability level.
- **Global Messenger:** Athlete ambassadors who foster awareness and advocacy for the

Special Olympics movement. Athletes must complete a training program in communications, speech writing, and presentations along with their local speech coach.

- **Special Olympics Healthy Athletes®:** Special Olympics Healthy Athletes®, made possible by the Golisano Foundation, is a program dedicated to providing health services and education to Special Olympics athletes, and changing the way health systems interact with people with intellectual disabilities.
- **Local Program:** The Local Program is the direct service unit for athletes and their family members within Special Olympics West Virginia. The Local Program engages with the public to provide training and competition opportunities while creating inclusive communities. Training and competition are provided for individuals with intellectual disabilities and Unified Sports partners. The Local Program is at the grassroots level of the Special Olympics movement.
- **Medical:** See “Athlete Medical Form”
- **Quality Games Training:** Event management training offered by SONA that combines classroom session on the process of organizing Games with practical on-site training at a Program Summer Games.
- **SOI General Rules:** The Special Olympics, Inc. (SOI) General Rules provide the rules and guidelines for all activities and bind participants (including Local Coordinators) to the Special Olympics purpose, mission, and goals.
 - [View Special Olympics General Rules:](https://resources.specialolympics.org/governance-and-leadership-excellence/special-olympics-general-rules/general-rules)
<https://resources.specialolympics.org/governance-and-leadership-excellence/special-olympics-general-rules/general-rules>
- **Staging:** The area where athletes convene as they prepare to compete. This is used to ensure that athletes are placed into the correct competitive divisions.
- **Sub-Program:** One of multiple geographical divisions of larger Special Olympics Programs Virginia (sometimes called an Area, Region, District, Section, etc.) The sub-Program is comprised of local teams within a geographical area.
- **Sub-Program Director:** The sub-Program Director is responsible for the coordination of all aspects of Special Olympics within a predetermined geographical area of the Special Olympics West Virginia Program.
- **Time Trials:** An event run at the same location as the competition for establishing scores to division athletes for final competition.
- **Special Olympics Unified Sports®:** An inclusive sports program that combines approximately equal numbers of teammates with and without intellectual disabilities on sports teams for training and competition. Age and ability-matching of athletes and Unified Sports partners are specifically defined on a sport-by-sport basis.
- **Special Olympics Unified Champion Schools®:** Unified Champion Schools create social inclusion in schools by building on Special Olympics’ values, principles, practices, and experiences. This programming strives to incorporate 3 components in schools: Unified Sports, inclusive student leadership and whole school engagement.
- **Unified Sports partner:** A person without an intellectual disability who trains in a Special Olympics sport and who competes at least once in a Special Olympics Game or competition at any level during the calendar year.

Acronyms

- **BOD:** Board of Directors
- **DD:** Developmental Disability
- **GMS:** Games Management Software
- **GMT:** Games Management Team
- **GOC:** Games Organizing Committee
- **HOD:** Head of Delegation
- **ID:** Intellectual Disability
- **IYL:** Inclusive Youth Leadership
- **LETR[®]:** Law Enforcement Torch Run[®] for Special Olympics
- **LOC:** Local Organizing Committee
- **MATP:** Motor Activities Training Program
- **NGB:** National Governing Body
- **PDD:** Pervasive Developmental Disability
- **POC:** Principles of Coaching
- **QGT:** Quality Games Training
- **SISD:** Socially Inclusive Schools District
- **SMT:** Sports Management Team
- **SSIP:** Sports Skills Instructional Program
- **SOI:** Special Olympics, Inc.
- **SONA:** Special Olympics North America
- **SONG:** Special Olympics National Games
- **SRAC:** Sports Rules Advisory Committee
- **YAC:** Youth Activation Council
- **YA:** Special Olympics Young Athletes
- **YLE:** Youth Leadership Experience

Part 1: Quick Start Guide to Local Program Management

Section 1: Overview

Mission & Vision

The mission of Special Olympics is to provide year-round sports training and athletic competition in a variety of Olympic-type sports for children and adults with intellectual disabilities giving them continuing opportunities to develop physical fitness, demonstrate courage, experience joy, and participate in a sharing of gifts, skills, and friendship with their families, other Special Olympics athletes, and the community.

The **vision** of Special Olympics is to help bring all persons with intellectual disabilities into the larger society under conditions whereby they are accepted, respected, and given the chance to become productive citizens.

One of the main ways Special Olympics is fostering inclusion through sports is the expansion of Special Olympics Unified Sports® programming, which brings together athletes with and without intellectual disabilities on the same team to promote inclusion. First pioneered in the 1980s, Unified Sports was inspired by a simple principle: **Training together and playing together is a quick path to friendship and understanding.**

Special Olympics Philosophy

Special Olympics is founded on the belief that people with intellectual disabilities can – with proper instruction and encouragement – learn, enjoy, and benefit from participation in individual and team sports. Special Olympics believes that consistent training is essential to the development of sports skills, and that competition among those of equal abilities is the most appropriate means of testing these skills, measuring progress, and providing incentives for personal growth.

Special Olympics has demonstrated that, through sports training and competition, people with intellectual disabilities can benefit physically, mentally, socially, and spiritually. Additionally, families are strengthened and the community at large – both through participation and observation – comes to better understand people with intellectual disabilities in an environment of equality, respect, and acceptance.

Goal

The **ultimate goal** of Special Olympics is to provide individuals with intellectual disabilities of all ages the opportunity to participate as productive and respected members of society at large. This occurs by offering ongoing opportunities for these individuals to develop and demonstrate their skills and talents through sports training and competition. This is done while also increasing the public's awareness of

their capabilities and needs, creating welcome communities of inclusion around the world. To learn more about Special Olympics, visit <http://www.specialolympics.org/>.

Constituents

A constituent is a member of the community who believes and supports the mission of the organization. Constituents are an integral part of Special Olympics and make up the fabric of programming and services provided at all levels.

Athletes

Individuals of all ages and ability levels are welcome to participate in Special Olympics. There are a variety of programs for children and adults. To be eligible to participate as a Special Olympics athlete, the individual must be identified as having an intellectual disability. Individuals are eligible for training and competition at age 8, and there is no upper age limit. Children ages 2-7 are eligible to participate in the Young Athletes program, which introduces young children to sports activities through curriculum-guided play. Each athlete must have a current medical form signed by a medical professional and a release form on file in order to participate in practices or competitions. Additional forms required may vary across Special Olympics West Virginia Programs.

Participants

Special Olympics participants are those individuals with an intellectual disability who train in a Special Olympics sport but have not competed in Special Olympics Games or competition at any level.

Unified Sports Partners

Unified Sports partners are individuals without an intellectual disability who participate in Special Olympics Unified Sports®.

Families – Parents & Siblings

Each Special Olympics Program supports family members in a variety of ways. Families are encouraged to participate at every level. They are an essential component of Special Olympics and are valued contributors. Special Olympics provides opportunities where siblings with and without intellectual disabilities can enjoy the same activities together. All family members of Special Olympics athletes are encouraged to participate in Special Olympics as volunteers, coaches, and Unified Sports partners.

Volunteers

As a volunteer driven organization, volunteers are the lifeblood of the organization, and continue to serve as the primary source of support for athletes. Volunteer opportunities include serving as a coach, Unified Sports partner, sports official, chaperone, committee member, fundraising volunteer, and more! Local Programs and services could not be provided without the support and commitment provided to the athletes by volunteers.

Sports

Training and competition in a variety of Olympic-type sports takes place at all levels of the Program. Special Olympics' primary goal is to provide year-round training and competition opportunities, which are directed by qualified and trained coaches. Individuals and teams compete in divisions according to age, gender, and ability. Each Local Program determines the sports and seasons of training and competition. Prior to each sport-specific season, volunteer coaches are trained and certified at clinics conducted by

Special Olympics professionals and other sports experts. Officials and event committee members also receive training.

Support Structure

Special Olympics, Inc. (SOI)

Special Olympics Inc. (SOI) is responsible for the overall leadership and management of all Special Olympics Programs, while providing technical assistance to each of the seven Special Olympics regions across the globe — which supports more than 6 million athletes and Unified Sports partners in over 190 countries. With the support of more than 1 million coaches and volunteers, Special Olympics delivers 32 Olympic-type sports and over 100,000 games and competitions throughout the year. Special Olympics is a global inclusion movement using sport, health, education and leadership programs every day around the world to end discrimination and empower people with intellectual disabilities.

Through a Protocol of Agreement signed on February 15, 1988, the International Olympic Committee (the IOC) officially recognized SOI and agreed to cooperate with SOI as a representative of the interests of athletes with intellectual disabilities. The IOC's formal recognition of SOI carries with it a solemn duty and responsibility, which must be discharged by SOI and all of its Special Olympics West Virginia Programs, to conduct Special Olympics training and competition in accordance with the highest ideals of the international Olympic movement, to guard and protect the use of the term "Special Olympics," and to protect the word "Olympics" from unauthorized use or exploitation.

The IOC's Protocol of Agreement with SOI prohibits SOI, Programs, and GOCs/LOCs from using the five ring Olympic logo, the Olympic anthem, or the Olympics motto. Each Special Olympics West Virginia Program agrees to fulfill these responsibilities by accepting accreditation from SOI, as provided in its Accreditation License and Article 6 of the General Rules.

Special Olympics North America (SONA)

Special Olympics North America (SONA) is one region of SOI and is responsible for helping implement the policies and initiatives of SOI. SONA must also support and guide each of the Special Olympics Programs within North America (Canada, the United States, and the Caribbean).

Special Olympics West Virginia Program (SOWV)

Each Special Olympics Accredited U.S. Program is a non-profit [501(c)(3)] charitable organization, incorporated to provide sports training and athletic competition for persons with intellectual disabilities. It is accredited by SOI and is responsible for following the policies and rules established by SOI in its delivery of services. It is known as a "Program" (with a capital "P") of Special Olympics.

Sub- Program

Many larger Special Olympics Programs are divided into smaller geographic regions, called sub-Programs. Sub-Programs are established to provide support, assistance, and competitive opportunities to the Local Programs. In this way, they can better assist Local Programs in their services to athletes, coaches, families, and volunteers of various communities. Each of these sub-Programs has an active Management Team of volunteers to provide assistance with its operations.

Local Program

The Local Program is the direct service unit for athletes and their family members within a Special Olympics Program, i.e. Special Olympics West Virginia. The Local Program engages with the public to provide training and competition opportunities, while creating inclusive communities. Training and competition are provided for individuals with intellectual disabilities and Unified Sports partners. The Local Program is at the grassroots level of the Special Olympics movement.

Donor/ Sponsor

It is through donors' and sponsors' financial support of the Special Olympics mission that athletes are able to train and compete free of charge around the globe.



Section 2: Management Team

A successful Local Program Coordinator will ensure the sustainability of the Local Program by creating a Management Team of volunteers to provide leadership, administration, and oversight.

Although each Local Program varies in size and culture, a team structure supports opportunities for athletes, families, and additional volunteers as the Program grows.

Recruiting the Best Management Team Members

Who do you recruit as Management Team members?

- Professionals with experience in key functional areas such as finance, public relations, fundraising, sports, etc.
- Current coaches and volunteers
- Parents and other family members
- Community sports programs, civic groups, and fraternal organizations
- Military and police organizations
- Unified Sports partners
- Athletes
- Teachers, professionals, and paraprofessionals in school settings – from elementary through high school, as well as colleges and universities
- Professionals and young professionals in partnering agencies (chamber of commerce) and businesses

Dividing Responsibilities Among Management Team Members

What areas will the Management Team focus on?

- Leadership
 - Works with and leads the Management Team
 - Delegates to a committee if/when appropriate
 - Oversees finances and fundraising activities
- Sports
 - Works with and supports coaches to implement registration, training, and competition
 - Secures facilities and equipment
 - Communicates with athletes to ensure that they have valid medicals
- Volunteers
 - Recruits, trains, and assigns volunteers while ensuring that Class A criteria have been met (more on Class A Volunteers in Section 3: Functions)
 - Oversees communications with volunteers
 - Monitors social media

Local Program Coordinators Shape the Management Team

How is the Management Team shaped?

- Assess experience, expertise, and skills of volunteers and partners engaged in the program
- Clearly define the Management Team member roles; all are engaged in meaningful work
- Educate the Management Team about Special Olympics and train them for the role they will play
- Meet regularly with the Management Team to plan ongoing activities and guide Local Program growth and development
- Ensure that the team creates a plan for succession as members rotate off

If there are only two leaders on the Management Team, the structure might follow the diagram as pictured below:



As individual Local Programs grow and expand, the Management Team may add one or more of the following roles and responsibilities based on need so that direct and responsive services are provided:

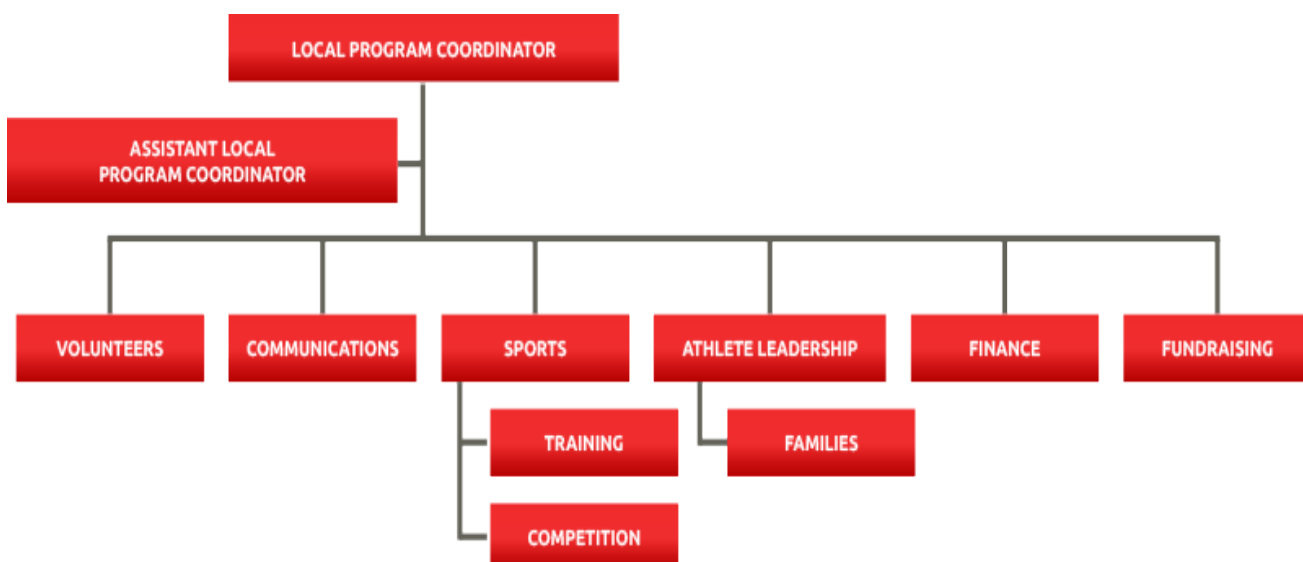
- **Sports:** Coordinate sport-specific training and competition for any available sport offered and recruit qualified coaches
- **Facilities/Equipment:** Secure practice facilities and equipment
- **Medical:** Manage medicals, release forms, and communicate with athletes and coaches to ensure that all athletes have valid medicals to participate
- **Volunteers:** Recruit and manage volunteer inquiries and ensure that Class A and B criteria are met. Assist with communication regarding General Orientation, Protective Behaviors, and Concussion Training
- **Communications:** Provide both internal and external communications and marketing of the Local Program
- **Financial Review & Reporting:** Ensure the Local Program is fiscally responsible
- **Fundraising:** Oversee plans to raise funds necessary to support the Local Program
- **Athlete Leadership:** Oversee athlete leadership training and involvement
- **Young Athletes & Families:** Welcome and mentor new families and young athletes
- **Outreach:** Recruit new athletes and community partners
- **Health & Wellness:** Implement Special Olympics Healthy Athletes®
- **Unified Sports:** Assist in the development of training and competition opportunities of teammates with and without intellectual disabilities

- Unified Champion Schools – School Liaison/Transition:** Help to recruit schools. Provide support as schools continue to grow. Maintain close communication with school teams to help athletes and Unified Sports partners transition to the Local Program (from the school).

Below is an example of an expanding structure as the Local Program grows:



Below is an example of a more fully developed Local Program:



Section 3: Functions

In order to run efficiently, all Local Programs rely on several functions for success.

Registration & Data: Overview

Athletes

Special Olympics aims to create an inclusive environment for all athletes. While no athlete will be turned away based on financial need, there are required steps to become a Special Olympics athlete.

- Special Olympics athletes must be at least 8-years-old and be a person with an intellectual disability, or a closely related developmental delay to compete. Children ages 2 to 7 years of age can train in the Special Olympics Young Athletes program. See General Rules, Article 2: Special Olympics Athletes:
<https://resources.specialolympics.org/governance-and-leadership-excellence/special-olympics-general-rules/article-2>
- Athletes must submit an Athlete Medical and Release Form to Special Olympics West Virginia. This health information form must be signed by a medical professional. Athletes under the age of 18, or who have guardians appointed to them, must have their parent or guardian sign the form. Athletes who are 18 years of age or older without a guardian may sign the Release Form themselves. This must be renewed every 3 years via a medical professional.
<https://sowv.org/become-an-athlete/>
- No athlete can be excluded due to lack of funds. Athletes are never asked to pay to participate in Special Olympics. See General Rules, Article 3: Sports Training & Competition:
<https://resources.specialolympics.org/governance-and-leadership-excellence/special-olympics-general-rules/article-3>

Unified Sports Partners

Unified Sports partners follow the registration process as Class A Volunteers. In order to become a Unified Sports partner, an individual must complete an Application for Participation, which includes a Special Olympics Release Form, and submit to a background check (if over 18). They must also complete Protective Behaviors and Concussion Awareness trainings, all of which have to be renewed every 3 years.

Volunteers

All volunteers must register and receive approval by the Special Olympics West Virginia Program. The registration procedure and forms are important tools for ensuring the safety and well-being of all athletes and volunteers. In compliance with Special Olympics, Inc. policy, all U.S. Programs must register and classify volunteers.

Class A Volunteers

What qualifies as a Class A Volunteer? A Class A Volunteer:

- Has regular close, physical contact with athletes
- Is in positions of authority, trust, or supervision with athletes
- Handles cash or other assets of the Local Program
- Chaperones athletes and may stay overnight or transport athletes
- Unified Sports Partners

Volunteers and Unified Partners must complete the Class A Volunteer Application, with a copy of a valid photo ID, and Protective Behaviors, Concussion Awareness Training, and SOWV General Orientation to Special Olympics training prior to participating in the local program.

<https://sowv.org/become-a-volunteer/>

All volunteers must undergo a background check. A background check is completed by Special Olympics West Virginia using a national vendor that consults a sex offender list. Motor vehicle checks are required for anyone driving at the direction of or on behalf of the organization or if an applicant answers “Yes” to any of the questions regarding suspension or revocation of a driver's license. **

All volunteers must receive training and materials regarding their volunteer duties and expectations.

Special Olympics West Virginia may make a determination regarding the level of the volunteer's involvement based on the aforementioned background check.

Special Olympics West Virginia will notify the volunteer and Local Program if they are unable to assist as a Class A Volunteer.

All volunteer information must be renewed every three years.

*If under the age of 18, the volunteer does not have to complete a background check until their 18th birthday.

Class B Volunteers

The qualifications for a Class B Volunteer differ from that of a Class A Volunteer. Class B Volunteers include volunteers who participate in one-day, day-of events, walk-on volunteers, or Healthy Athletes volunteers. Class B Volunteers have more limited contact with athletes.

While Class B Volunteers have limited contact with athletes, a strict registration protocol must still be followed.

- Class B Volunteers must sign in and produce a valid photo ID on the day of the event for which they will be volunteering.
- When checking in as a Class B Volunteer, the volunteer must provide the following information:
 - Name
 - Complete Address
 - Phone Number
 - Email
 - Group Affiliation (if any)

Disqualifiers

In order to ensure the safety of Special Olympics athletes, Unified Sports partners, and other volunteers, Special Olympics is selective with its volunteers. While Special Olympics invites anyone interested in volunteering for an organization committed to a culture of teamwork and inclusion, there are a number of disqualifiers for potential volunteers.

Disqualifiers for Being a Volunteer Include:

- Child abuse
- Sexual abuse or sexual misconduct between a minor/adult
- Causing a child's death
- Neglect of a child or any other individual for whom the potential volunteer has held responsibility
- Kidnapping
- Manslaughter
- Felony arrest/prosecution
- Arson
- Criminal sexual conduct
- Driving while intoxicated (DWI), driving under the influence (DUI), or comparable offenses; or three or more moving violations within the past three years, disqualifies the volunteer from driving on behalf of Special Olympics for seven years

Submitting Volunteer Registration

All Volunteer Registration Forms must be submitted and volunteers must be approved by Special Olympics West Virginia prior to commencing any Class A Volunteer duties. All volunteers listed as coaches or chaperones, or listed on a housing form for competition must have a current, approved Class A Volunteer form on file. Proof of Protective Behaviors and Concussion Awareness training completion must also be on file prior to athlete training and competition. *

**** In the United States, Special Olympics, Inc. requires that all Class A Volunteers complete Protective training and Concussion Awareness training PRIOR to commencing any volunteer activities with the Local Program.***

Eligibility Statement

See also General Rules, Article 2: Special Olympics Athletes:

<https://resources.specialolympics.org/governance-and-leadership-excellence/special-olympics-general-rules/article-2>

General Statement

Special Olympics training and competition is open to every person with intellectual disabilities who is at least 8 years of age and who registers to participate in Special Olympics as required by the General Rules.

Age Requirement

Individuals are eligible for training and competition at age 8, and there is no upper age limit for participation. Children ages 2 to 7 are eligible to participate in the Special Olympics Young Athletes program.

A Local Program may permit children who are at least 6-years-old to participate in age-appropriate

Special Olympics training programs, or in specific and age-appropriate cultural or social activities offered during a Special Olympics event. Such children may be recognized for their participation in such training or other non-competitive activities through certificates of participation, or through other types of recognition not associated with participation in Special Olympics competition.

No child may participate in a Special Olympics competition (or be awarded medals or ribbons associated with competition) prior to their 8th birthday.

Identifying a Person with an Intellectual Disability

A person is considered to have an intellectual disability for purposes of determining their eligibility to participate in Special Olympics if that person satisfies one of the following requirements:

- The person has been identified by an agency or professional as having an intellectual disability as determined by their localities
- The person has an intellectual delay as determined by standardized measures, such as intelligent quotient (or IQ) testing, or other measures which are generally accepted within the professional community as being a reliable measurement of the existence of an intellectual delay
- The person has a closely related intellectual disability, meaning that the person has functional limitations in both general learning (such as IQ) and adaptive skills (such as in recreation, work, independent living, self-direction, or self-care)
- Persons whose functional limitations are based solely on a physical, behavioral, or emotional disability, or a specific learning or sensory disability, are not eligible to participate as Special Olympics athletes. However, these individuals may volunteer for Special Olympics or consider becoming a Unified Sports partner.

Families

Families (parents and siblings) are a vital component of the Special Olympics movement. At the local level, there are three types of family involvement commonly observed:

- **Non-Participatory:** At this level, the family's sole involvement is to make sure their family member/athlete regularly attends practices and is suitably prepared to attend and participate in competition.
- **Supportive:** These are family members who attend practices and competition, but do not undertake any additional roles.
- **Active Participants:** These families take on leadership roles. This includes serving as coaches, organizing fundraisers, acting as chaperones or committee members, serving as Local Program Coordinators, and more.

The Local Program should create a position on the Management Team for a Family Representative with specific goals of providing opportunities for family involvement. The Family Representative should:

- Contact families through communication and outreach.
- Create a welcome letter for new athletes, which includes a family welcome letter with a list of volunteer opportunities and activities.
- Host a new family orientation session.
- Invite families to an annual picnic highlighting the sports season.
- Offer family hospitality at all events with a sign-in to capture contact information.

- Invite families to an annual or quarterly meeting with other families to get their feedback.
- Create a family newsletter.
- And the number one thing you could do for families is ask them to help and get involved.

Working with Agency/ Provider Staff & Volunteers

Older athletes who participate in Special Olympics may live in group homes; small residential facilities in the general community, that ideally have six or fewer occupants, who are watched over by trained caregivers 24 hours per day. Turnover of group homes staff members is quite high for a variety of reasons, and you may find challenges communicating with staff due to turnover and other circumstances. Local Programs need to establish the most effective means for communicating with group home staff, articulating expectations and needs for their support. Consider involving them in the Local Program as coaches, volunteers, and Unified Sports partners. Local Programs provide valuable sports training and competition opportunities for group home residents and it will be necessary to establish a relationship with the group home and agency provider staff.

Planning & Meetings

Planning ensures that the Local Program stays on track, evolves, and adjusts to change. The Local Program's plan should be aligned with the Special Olympics West Virginia Program and the Global Strategic Plan. Local Program Committees need to meet on a regular basis. Effective meetings and planning will help to establish and maintain a successful Local Program.

Short-Term Planning

Short-term planning involves immediate plans, typically for the upcoming season. *Considerations include:*

- Financial
- Coaches and volunteer
- Facilities
- Complete and current registration

Medium- Term Planning

Medium-term planning may look at the coming year.

Considerations include:

- Competitive opportunities
- Training opportunities for coaches and athletes
 - **TIP:** Create a calendar of events and important dates, such as approaching deadlines
- Financial needs, including expenses and revenue
- Marketing and communications
- Other activities or opportunities that may be available to stakeholders

Long- Term Planning

Long-term planning is essential for the sustainability of the Local Program. Long-term planning typically involves a three to five-year cycle, and considers what the team envisions for the Local Program will look like in five years (both programmatically and financially). This plan should be

compatible with the direction of your affiliated Special Olympics West Virginia Program.

In order to establish a successful long-term plan, the following steps should be followed:

- Ensure that long-term goals are compatible with the direction of the Special Olympics West Virginia Program.
- Review and assess Special Olympics Program Quality Standards for ideas and examples that can be adopted to improve the Local Program.
- Solicit ideas and feedback of all stakeholders in the Local Program. This includes athletes, coaches, families, volunteers, donors, and partner agencies.

Develop a plan based on this information and **share!**

Local Program Meetings

Local Program Management Teams should meet on a regular basis. The Local Program Coordinator creates an agenda that allows for area reports and discussion. Guiding points to running an effective meeting include:

- Set the agenda and distribute it to Management Team members prior to the meeting.
- Start (and end) the meeting on time.
- Set the ground rules for the meeting. Share the objective of the meeting and the projected outcomes with the Management Team.
- Include reports from Management Team members.
- End with an action plan.

Sample Agenda for a Local Program Management Team Meeting

- Mission Moment – Ask a member of the Management Team to share an experience that supports the mission of Special Olympics.
- Approval of Minutes from Previous Meeting
- Management Team Member Reports:
 - Local Program Coordinator
 - Sports & Competition
 - Volunteers
 - Communications
 - Athlete Leadership
 - Finance
 - Fundraising
 - Other Reports
- Current Sports Season
 - Training
 - Competitions
- New Business
- Action Plan
- Adjournment

Here are additional resources for how to run an effective meeting:

- <https://www.mindtools.com/CommSkil/RunningMeetings.htm>
- <https://www.nytimes.com/guides/business/how-to-run-an-effective->

- [meeting?mcubz=1](#)
- <https://www.thebalance.com/effective-meetings-produce-results-before-the-meeting-1918729>

For additional templates of meetings and guidance on how to run an effective meeting search Effective Meetings in your browser.

Risk Management: Health & Safety

Safety in Special Olympics activities is vital to providing a positive atmosphere for our athletes and volunteers. Prudent and proactive risk management practices help ensure the safety and well-being of all participants. It is crucial that you become familiar with Special Olympics West Virginia's Crisis and Emergency Plan, and know who to contact in the event of an emergency.

Sports Training & Competition

Ensure the safety of athletes, Unified Sports partners, coaches, volunteers, and those cheering on the athletes by promoting safety during sports training and competition.

During Practice Sessions and at Competitions

- Walk through the facility before each training session or competition.
- Always have a basic first aid kit available at every practice and competition.
- Always have athletes' medicals available at practices and competition. Be sure to protect the privacy of this information and note where these forms go at the end of the season.
- Establish a simple protocol in case of an accident or other incident. Provide all coaches with the most up-to-date and accurate emergency contact information for athletes, Unified Sports partners, and volunteers.
- Create a simple crisis communication plan for your Local Program that includes who to contact, and in what order. Always notify the appropriate staff contact at your Special Olympics West Virginia Program of this plan.
- Ensure that there is at least a 4:1 ratio of athletes to coach in order to provide proper supervision (3:1 ratio for Winter Sports).
- Be sure to establish that a coach can contact the Local Program Coordinator in case of an incident.
- Provide the coaches with the number and location of the nearest emergency services.

Incident Reporting

An Incident Report Form should be completed following all injuries or incidents. Other incidents may include property damage, abuse, theft, or incidents requiring law enforcement. This helps document injuries and incidents, which in some cases may speed up the activation of applicable insurances.

The Incident Report Form is a factual account and should be free of speculation or hearsay. It is best to leave the determination of potential liability to the claim's professionals.

Following an injury or incident, forms should be promptly sent to Special Olympics West Virginia. This form can be obtained from the Special Olympics West Virginia Program.

Insurance

General Liability

The Special Olympics General Liability policy protects insured Special Olympics organizations, athletes, and registered volunteers from third-party claims of bodily injury, property damage, and personal injury due to alleged negligence arising from the conduct by Special Olympics during a Special Olympics activity. The general liability policy has been endorsed to provide coverage for losses resulting from damage to property in the care, custody, or control of Special Olympics.

Automobile Liability

This policy provides protection to Special Olympics for liability claims arising as a direct result of the use of a non-owned or hired automobile. For coverage to be effective, the vehicle must be used for Special Olympics business with the permission of Special Olympics and driven by an employee or a registered volunteer of Special Olympics.

NOTE: If the injury is serious or results in death, please contact American Specialty immediately at (800) 566-7941 (24 hours a day, 7 days a week) and Special Olympics West Virginia’s crisis communications contact and/or CEO.

*Please note that exclusions and additional terms apply to coverages. Please consult with Special Olympics West Virginia for more information.

Communications & Marketing

For success to occur with all stakeholders, the Local Program needs to communicate often, and in a variety of ways.

For communications on behalf of Special Olympics and/or the Local Program, please contact your Special Olympics West Virginia Program for the template.

Planned Communication / Engagement ***Internal***

What do you need to communicate?

- Practice schedules
- Competition dates
- Fundraising activities
- Training opportunities for athletes and coaches
- Travel details
- Celebrations
- Meetings

When do you communicate?

It is important to communicate on a regular basis, even when something isn’t immediately planned. For example: “We will start training for Winter Games in six weeks; look for the specific practice schedule to be out by_____.”

At other times when there may not be forthcoming events, consider communicating on an as-needed basis.

How do you communicate?

Consider that everyone has different preferences. Do not rely solely on one means of communication.

Some great ways to communicate information to others are:

- Email
- Text messaging
- Newsletters (print and/or digital)
- Private/moderated groups on Facebook with member/access control
- Website
- Social media*
- A phone tree

*Be mindful of the content posted to social media. Some information is only appropriate for members of closed groups, and not for the general public.

Reminders:

- Keep your list current! Be sure to add new athletes, families, and volunteers when they join a Local Program. Delete those who are inactive.
- Keep your communication lively so that others will continue to be engaged. However, always maintain professionalism — remember that you are representing Special Olympics!

External

What coverage to expect from Local Media?

- Overall education/awareness about the Local Program, including its needs and activities
- Upcoming competitions
- Results from competitions
- Athletes and/or coach profiles
- Volunteer recruitment needs
- Assistance with fundraising activities

What to communicate with fans, followers, and the general public?

- Program news, activities, and ways to engage
- Achievements, milestones, and good news
- Athlete, coach, volunteer, and family profiles
- Volunteer opportunities
- Ways to support the Local Program financially – including donations, special events, and fundraisers
- Upcoming events

How to communicate with fans, followers, and the general public?

- Social media
- Website
- Newsletters (print and/or digital)
- Emails
- Printed collateral – including fact sheets, brochures, posters, and flyers
- Town halls

Who's doing the talking?

Each Local Program should have prepared individuals qualified to speak to the media or public about Special Olympics. Be sure to engage trained Special Olympics Global Messengers.

Any and all individuals speaking to the media or public should maintain clear, consistent messaging about the Local Program.

Language Guidelines

It is critical that appropriate terminology is used when speaking about a Special Olympics Local Program. This helps to educate the public while reinforcing the organization's brand.

View the Special Olympics Language Guidelines: https://media.specialolympics.org/sona/SONA-Language-Guidelines-2019.pdf?_ga=2.175111530.975467479.1562769604-267522586.1554297364

View the Special Olympics Intellectual Disability Terminology Guidelines: <https://www.dropbox.com/s/duouizmoms2ydm/SONA-Terminology-Guidelines-July-2019.docx?dl=0>

Branding

Special Olympics has extensive branding guidelines, including sub- Program guidelines, that are available online: <https://resources.specialolympics.org/marketing-and-communications/special-olympics-brand>

Uniforms

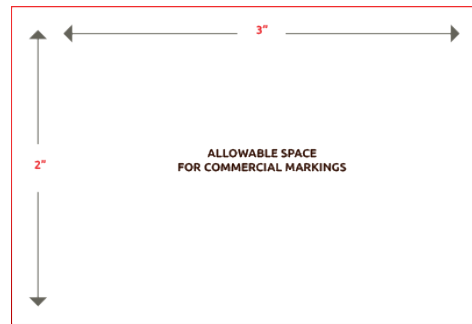
The following information is useful when ordering uniforms.

Commercial Messages on Athlete Uniforms and Competition Numbers

In order to avoid commercial exploitation of persons with intellectual disabilities – per the Special Olympics, Inc. General Rules – no uniforms, bibs, or other signs bearing competition numbers worn by Special Olympics athletes and Unified partners during any competition or during any Opening or Closing Ceremonies of any Games may be emblazoned with commercial names or commercial messages. The only commercial markings that may be displayed on athletes' uniforms during Games, competitions, and Opening and Closing Ceremonies are the normal commercial marking of the manufacturer.

In terms of Special Olympics uniforms, “normal commercial markings” are limited to the following:

- On larger clothing items – such as shirts, jackets, pants, jerseys, and sweatshirts – one logo or commercial name per clothing item is permitted if that name or display does not exceed an area of 6 square inches or about 39 square centimeters (such as a display measuring 2” x 3” of 5.08 cm X 7.62 cm):



- Please note that, in addition to commercial messages, each sport may have specific guidelines to the size and location of numbers and team names as indicated by each National Governing Body.
- On small clothing items – such as caps, socks, hats, gloves, and belts – one logo or commercial name per clothing item is permitted if that name or display does not exceed an area of 3 square inches in 19.35 square centimeters.
- On athletic shoes, no logos or commercial names are permitted except for the brand name and logo that are included in the manufacturer of athletic shoes that are sold to the general public.
- Please check the logo guidelines prior to ordering uniforms. If in doubt, contact the Special Olympics office; they will review artwork for compliance.

Special Olympics sub-Program Visual Identity Guidelines
Proper representation of a sub-Program

B Team Representation
Examples of how to properly represent a team through their team lock-up mark.

The image shows four t-shirt templates illustrating different branding options for the Edmonton Dolphins sub-program. The first template shows the team logo on the front and back. The second template shows the team name 'EDMONTON' vertically on the left side and the logo on the right chest. The third template shows the team name on the left side and the logo on the right chest. The fourth template shows the team name on the left side and the logo on the right chest.

T-shirts for sub-Programs
Team logo on the front – team and sub-Program representation on the back.

Optional t-shirts for sub-Programs
Additional designs can propose the name of the sub-Program on the length of the sleeve with the Accredited Program logo on the top left hand side.

SpecialOlympics.org Special Olympics Sub-Program Visual Identity Guidelines / December 2012

Branding for Team Uniforms and T-Shirts

Athlete Program Level Branding – No Sponsorship

Athlete t-shirts and/or uniforms should not carry any sponsorship branding. They can, however, be branded with the Special Olympics logo.

Lockup for sub-Programs, Clubs, or Teams

When creating shirts for sub-Programs, clubs, or teams, a lockup can be used that gives primacy to the actual team name. This acknowledges the importance of local teams within Special Olympics, Inc. and facilitates the creation of distinct team identities for games within a program.

Above and below are examples of the Special Olympics brand in action with examples of lockups for sub-Programs, clubs, or teams.


Brand in action

T-shirts

Lock-up for sub-programs, clubs or teams

1 When creating shirts for sub-programs, clubs or teams, a lock-up can be used that gives primacy to the actual team name. This acknowledges the importance of local teams within Special Olympics and facilitates the creation of distinct team identities for games within a program.

- 1** The name of the team has primacy on the shirt ensuring team or club recognition between competing teams. The choice of typeface and design of this element is at the discretion of the program.
- 2** The name of the Accredited Program to which the sub-program, team or club is affiliated is set in all capitals: Ubuntu Bold as illustrated here.
- 3** The Special Olympics symbol is centred beneath the program name.
- 4** The color, typestyle or motif created for each team reflects the local identity of the club or team while clearly identifying the club or team as being within the Special Olympics Accredited Program.



Sub-program / Team / Club
Local expression

Program
Standardized

Branding for Volunteer Apparel

In addition to banners and signs, logos on volunteer t-shirts are an appropriate and approved way to recognize local sponsors, and could be placed on sleeves and/or the back of the shirt. Highlight the official brand on the front of the shirt.

Sports: Training & Competition

As a Local Program Coordinator, it is important to understand the basics of sports training and competition. There are factors involved in getting athletes ready for competition and then taking them to competition.

Please note that prior to the beginning of training and attending competition, the following elements should be in place:

- Registration of the Local Program with the Special Olympics West Virginia Program
- Selection of sport(s) for competition
- Athlete medical forms and release forms completed and submitted
- Unified Partner application and Class A Volunteer forms and certification completed
- Volunteer/coach recruitment and Class A Volunteer background completed
- Head coach and assistant coaches trained and certified

Special Olympics offers something for everyone. In addition to the available Official Sports, Special Olympics offers Recognized Sports and the ability to get involved in locally popular sports.

Fact Sheets for each sport are available at <https://resources.specialolympics.org/sports-essentials/sports-and-coaching? ga=2.93811866.629866331.1558025929-403881953.1534395769>

Official sports

Special Olympics offers the following Official Sports. Not all may be offered in your Special Olympics West Virginia Program.

Spring Sports

Basketball, Competitive Cheer

Summer Sports

Athletics (Track & Field), Cornhole, Bocce, Equestrian, Golf, Softball, Swimming, Tennis,

Fall Sports

Flag Football, Volleyball

Winter Sports

Bowling, Alpine Skiing, Cross Country Skiing, Snowboarding, Snowshoeing

Recognized Sports

Cricket, DanceSport, Kayaking

Locally Popular Sports

There is also an opportunity for athletes to engage in locally popular sports; Badminton, Cycling, Football (Soccer), Artistic Gymnastics, Rhythmic Gymnastics, Handball, Judo, Open Water Swimming, Powerlifting, Rollerskating, Sailing, Figure Skating, Floorball, Floor Hockey, Short Track Speed Skating, Table Tennis, Triathlon

PLEASE NOTE:

- Locally Popular Sports may require pre-approval from SOI if they have been determined by SOI to be sports that might expose Special Olympics athletes to unreasonable risks to their health or safety.
- No Special Olympics West Virginia Program may offer any training or competition in any sport which SOI has classified as a prohibited sport.
- Requests for permission to offer one of these sports must be accompanied by proposed rules and safety standards. SOI has classified the following sports as Locally Popular Sports that require pre-approval:
 - Combative sports
 - Martial arts (other than Judo)
 - Sledding sports
 - Motor sports
 - Aerial sports
 - Shooting
 - Archery

Read Article 3: Sports Training and Competition in the Special Olympics General Rules:

<https://resources.specialolympics.org/governance-and-leadership-excellence/special-olympics->

[general-rules/article-3](#)

Sports Rules

All rules are in the Official Special Olympics Sports Rules book, located on the SOI website at <https://resources.specialolympics.org/sports-essentials/sports-and-coaching>

The Official Special Olympics Sports Rules govern all Special Olympics competitions. Special Olympics has developed these rules based upon International Federation and National Governing Body Rules for each sport.

Please refer to Sports Rules Article 1 (*link above*) for information pertaining to Codes of Conduct, Training Standards, Medical and Safety Requirements, Divisioning, Awards, Criteria for Advancement to Higher Levels of Competition, and Unified Sports.

Special Olympics Unified Sports®

Special Olympics Unified Sports® is an inclusive sports program that includes Special Olympics athletes (individuals with intellectual disabilities) and Unified Sports partners (individuals without intellectual disabilities). Through shared sport training and competition, Unified Sports promotes inclusion for individuals with and without intellectual disabilities.

Coaches are required to take the Coaching Unified Sports Course, which is available free of charge online at <https://nfhslearn.com/courses/36000/coaching-unified-sports>.

Unified Sports Models/Styles of Play

Unified Sports is identified in Article 1 of the Sports Rules as three inclusive models – Competitive, Player Development, and Recreational. Each of these models reflects a certain style of play and teammate composition, but what all three have in common is that they are inclusive. Coaches should consult with their local Special Olympics Programs regarding what Unified Sports models are offered and at which events. It is also important to know that some Programs may use different terms in naming the three models or styles of play.

Unified Sports Competitive Style

- All athletes and partners must have sport-specific skills and tactics to complete without modification of rules.
- Teams in this model may be eligible for advancement to Regional and World Games.
- Athletes and Unified partners in team sports must be of similar age and ability.
- Athletes and Unified partners in sports, such as golf, may have a greater variance in age and ability.

Unified Sports Player Development Style

- Athletes and Unified partners are not required to be of similar abilities, but must be of similar ages.
- Teammates of greater abilities serve as mentors to assist teammates of lower abilities in developing sport-specific skills and tactics.
- In certain sports, such as bocce, more age variation is allowed.
- Competition is available at this level.



Unified Sports Recreation Style

- Consists of inclusive recreational sports opportunities for athletes and Unified partners, or other organizations as introductory one-day events, exhibitions, or demonstrations.
- There is no prescribed training, competition, and/or team composition requirements.
- Opportunities may take place in partnership with schools, sports clubs, and/or community programs.
- Physical education class activities and intramural sports may also fall into this category.

Sports Training & Practice

Requirements concerning Special Olympics training may be found in Article 1, Section 3.05: <https://resources.specialolympics.org/governance-and-leadership-excellence/special-olympics-general-rules/article-1>

Minimum Standards

The minimum standards for athletes desiring to compete in Special Olympics are based on Special Olympics Inc. Sports Rules. All athletes must be trained in the sport before competing. Part of this training should include nutrition education and physical conditioning.

Eight consecutive weeks of training are mandatory. However, for Regional or World Games, training is recommended twice a week for ten weeks. All athletes must have opportunities to compete during that time.

Levels of Competition

Athletes of all ability levels have an opportunity to advance to the next higher-level competition provided the sport and event are offered at the next level, from sub-Program Games to World Games.



Criteria for Advancement

The criteria for advancement can be found on page 18 of the Official Special Olympics Sports Rules: https://media.specialolympics.org/resources/sports-essentials/general/Sports-Rules-Article-1-2017.pdf?_ga=2.131747980.2019899453.1563303828-267522586.1554297364

Special Olympics staff, with assistance from the Games Organizing Committees, may establish quotas for the number of athletes and teams participating in Games.

The Special Olympics West Virginia Program identifies the number of athletes or teams eligible for advancement within the sport/event based on participation in competition at the lower level. If the number of eligible athletes or teams does not exceed the quota, all athletes and teams may advance.

If the number of eligible athletes or teams does exceed the quota, athletes or teams that advance shall be selected as follows:

- Priority is given to first place finishers from all divisions of the sport/event.
- If the number of first place finishers exceeds the quota, select athletes or teams will advance by random draw.
- If there are not enough first place finishers to fill the quota, all first-place finishers shall advance.
- The remaining quota shall be filled by random draw of second place finishers from all divisions of the sport/event.
- This process is repeated – adding each place of finish as necessary – until the quota is filled.

These procedures apply to both individual and team sports, including Unified Sports®. The rules and processes to select athletes to the next higher level of competition should be shared with all athletes, families, and volunteers.

Other Sport Opportunities

In addition to traditional sports competition between eligible athletes, Special Olympics provides a variety of competition opportunities for athletes of all abilities.

Motor Activities Training Program (MATP)

<https://resources.specialolympics.org/motor-activity-training-program>

- Participation for athletes with significant intellectual and/or physical disabilities who require the greatest assistance and support
- A non-competitive training program that is individualized for each athlete's existing skill level
- Preparation of athletes through sport-related activities appropriate for their abilities and age
- Recognition for participation and personal bests through MATP ribbons or medals

Individual Skills and Modified Lead- Up Skills

- Athletes with lower ability can participate in lead-up skills for team sports

- Athletes with lower ability can participate in modified individual sport skills

Special Olympics Young Athletes

<https://resources.specialolympics.org/sports-essentials/young-athletes>

Young Athletes is a unique inclusive sport and play program for children with and without intellectual disabilities between the ages of 2 through 7. The focus is on fun activities that are important to mental and physical development. Children learn how to play with others and develop skills important to learning.

The benefits of the Young Athletes program are numerous and include (but are not limited to):

- Motor skill development
- Physical fitness
- Social, emotional, and learning skills
- Higher family expectations for the future
- Sports readiness
- Social inclusion and acceptance

Recruitment & Training

Volunteers

Volunteers are the backbone of Special Olympics. The thoughtful recruitment, coordination, and retention of volunteers is critical. This process includes a number of important tasks, such as recruiting, matching skills to roles, arranging appropriate training for volunteers, and acknowledging their contributions. Important skill sets for a volunteer Local Program Coordinator include good organizational, interpersonal, and communication skills. The objective is to recruit, train, organize, recognize, and retain volunteers.

Action Steps for Volunteer Management

- Obtain a list of roles, qualifications, and time needed for volunteers regarding specific activities
- Maintain position descriptions for volunteers and include training duties
- Appoint a volunteer committee to assist with recruiting and training
- Follow up with referrals from the Special Olympics West Virginia Program or local volunteer agencies in a timely manner
- Hold interviews as necessary for potential volunteers to determine interests and skills
- Work with the Volunteer Coordinator and Management Team to assign volunteers to appropriate positions
- Arrange in-service training for volunteers as necessary
- Provide a way for volunteers to offer feedback about their experience
- Ensure that volunteers are properly supervised at events
- Ensure that all volunteers complete the appropriate volunteer registration forms
- Create and maintain a current volunteer database
- Ensure that thank you letters, appreciation notes, or activities are provided to thank volunteers

- Update appropriate web pages with volunteer needs

Volunteer Expectations

- Complete the required volunteer registrations forms and trainings
- Fulfill the responsibilities of your assignment
- Set a good example for the athletes
- Model good sportsmanship and behavior
- Be continually vigilant and aware of the safety of the athletes
- Be loyal to your commitment to your Special Olympics Special Olympics West Virginia Program
- Grow, learn, and challenge yourself through your involvement with Special Olympics

Increasing Volunteers

There are a number of steps Local Program Coordinators and committee members should take in order to increase the number of volunteers. Below are some tips to increase volunteer efforts:

- Determine needs and skills required
- Establish programs based on athlete numbers and opportunities athletes would like
- Advertise volunteer needs for local events through social media
- Advertise coach needs as sports develop

Where are potential targets for volunteers?

- College volunteer centers
- Sports organizations
- Sports leagues
- Community volunteer centers
- Sponsor volunteers
- High schools
- Families of Young Athletes™
- Service groups

How do I target these groups? How do I recruit them?

- Ensure that all recruitment efforts have a clear message and follow-up plan.
- Consider the following questions:
 - What is the time commitment?
 - What skills are required?
 - How does the volunteer follow-up if interested?
- Partner with sponsors to offer high-level volunteer roles for day events, such as venue managers
- Research local businesses that may offer employee volunteer hours and donate to charities based on hours served by employees
- Develop volunteer appreciation acknowledgements to maintain the volunteer base
- Invite volunteers to serve on Management Teams and utilize their talents to grow your Local Program

Coaches

Having a well-trained team of coaches is critical to the success of Special Olympics and Local Programs, as well as ensuring the happiness and success of athletes and Unified Sports coaches

There are a number of targeting sources for Special Olympics coaches:

- Sports organizations
- Sports leagues
- Colleges and universities – including their athletic departments, sororities and fraternities, academic departments, and/or residential halls
- Service groups
- Local officials' associations
- Adaptive Physical Education and Physical Education teachers
- Special Education and General Education teachers
- Former coaches at elementary, middle school/junior high, and high school levels
- College students in Special Education programs
- Partnerships with colleges, youth sports organizations, and professional clubs

Special Olympics U.S.A. Coach Education System Overview

Special Olympics staff and volunteers are continually evolving and enhancing our coach education system to meet the needs of volunteer coaches and the athletes they coach. The Coach Education System identifies basic minimum requirements for all coaches and recommendations for continuing education. The intent is to assist Special Olympics Programs in designing and providing quality sports training for Special Olympics coaches and ultimately the athletes.

**Please note that each Program may have different requirements and language (i.e. Assistant Coach vs. Sports Volunteer) with respect to coach certification.*

Types of Special Olympics Volunteer Coach Roles

There are several roles for a volunteer who wishes to become involved in Special Olympics sports as a **certified** Sports Volunteer/Coach. While some coaches may choose to remain a Sports Volunteer, other coaches may strive to increase their level of certification. Coaches who wish to increase their coaching level can follow the recommended U.S.A. Coach Education System outlined below.

SPORT ASSISTANT (Entry Level Requirements)

- Class A Form / Complete Background Check
- Special Olympics WV General Orientation
- Protective Behaviors Training
- Concussion Course

LEVEL 1 – CERTIFIED COACH (Core Coaching Knowledge in Traditional Special Olympics and/or Unified Sports)

Traditional Special Olympics

- All Sport Assistant requirements

- Coaching Special Olympics Athletes – online course or in person training conducted by a Program approved trainer
- Sports Specific Course – online for those sports where online courses have been developed or in-person sport specific training

Unified Sports

- All Sport Assistant requirements
- Coaching Unified Sports – online course via NFHS or in person training conducted by a Program approved trainer
- Sports Specific Course – online for those sports where online courses have been developed or in-person sport specific training

** NOTE: Level required of Head Coaches attending USA National Games in the specific sport being coached.*

LEVEL 3 – ADVANCED CERTIFIED COACH* (Sports Specific Knowledge in Traditional Special Olympics or Unified Sports)

- All Level 2 requirements
- Principles of Coaching Course – online or in person training conducted by a Program approved trainer

*** NOTE: Level required of Head Coaches attending World Games.*

Courses for Continuing Education

In order to maintain certification, a coach must update his/her certifications every three years. A non-comprehensive list of courses approved for continuing education include:

- First-aid and Cardiopulmonary Resuscitation (CPR) Course (strongly encouraged) www.nfhslearn.com/courses/26
- NFHS - Sports Nutrition www.nfhslearn.com/courses/55000
- NFHS - Sportsmanship Course <https://nfhslearn.com/courses/37000/sportsmanship>
- Officials Training
- A Coach's Playbook: Introduction to Autism and Instructional Strategies for Coaching: <http://specialolympicsva.org/sports/coaches-corner/a-coachs-playbook-autism>
- NFHS - Fundamentals of Coaching www.nfhslearn.com/courses/61001
- Other Special Olympics approved courses for re-certification – courses that help a coach become a better coach will be accepted. However, third party courses must be approved by Program headquarters

Retaining Coaches

Retaining coaches is critical. Coaches build trust and relationships with athletes, Unified partners, volunteers, and families. There are a number of ways to retain coaches and build a stronger Special Olympics community.

- Provide an initial meeting to review coaching role.
- Provide ongoing training opportunities.
- Empower the coach to be the leader of their team.
- Ensure effective communication prior to and throughout the season. Offer the opportunity to debrief after the season in preparation for the next year.
- Provide recognition at every level of coach certification.
- Establish your own Coach of the Year Award; submit entry to Special Olympics North America Coach of the Year Program.
- Identify coach needs through an Input Council and various communication pathways.
- Incentivize continued education (advancement to higher competition) to include, but not limited to, being selected to coach at a National, Regional, or World Games.
- Invite coaches to participate in other events throughout the year.

Athlete Growth

Special Olympics Local Programs are always growing. It's important to reach as many athletes as possible to help maintain growth. Below are a number of tips to assist with outreach to new and current athletes.

Create Links to Local Groups & Agencies Serving Individuals with Disabilities

- Partner with Parks and Recreation Departments for opportunities to include individuals with intellectual disabilities in their current Programs. Connect links between Special Olympics and Parks and Recreation websites for more information on how to get involved.
- Connect with all agencies and community services – such as group homes – to bring in older athletes or maintain current athlete base as they age out of school.

Advertise Locally & Utilize Social Media

- Create website and social media accounts. Some social media platforms to consider are Facebook, Twitter, and Instagram.
- Advertise upcoming events and include information such as how to join, how to volunteer, and how to donate.
- Local Programs can use relevant hashtags in their social media posts.
- Abide by any program established policies.

Target Local Schools

- Introduce the Special Olympics Unified Champion Schools[®] program, which is a comprehensive model implemented in the U.S. that combines Special Olympics Unified Sports[®], Inclusive Youth Leadership, and Whole School Engagement to create school and community climates of acceptance and inclusion. This can begin as early as kindergarten with Young Athletes, and continue throughout elementary, middle, and high school with Unified Sports and/or related sports and leadership opportunities.
- Work with local independent school districts, Special Education Directors, or Athletic Directors. Partner with them to add Special Olympics opportunities to the school day or as a part of after-school programs with a focus on the middle schools.
- Speak at parent meetings and/or teacher professional development days
- Provide Special Olympics and Unified Sports information to students and their families through newsletters and brochures.

Target Young Athletes

- Partner with local groups that involve people with intellectual disabilities, such as The Arc and the Down Syndrome Society. Present information about the Young Athletes program at their meetings, in their newsletters, etc.
- Target inclusive preschools and share information as to how they can incorporate the program during the day, and encourage teachers to become coaches. Showcase athlete talents at a Young Athletes festival.
- Offer a Young Athletes Festival at Local Games and invite the public. To attract new families, incorporate Special Olympics Healthy Athletes[®] opportunities that begin with a screening.

Engage Local College Recreation Departments with Special Olympics College

Special Olympics College (SO College) Clubs function as an official club on campus. SO College Clubs connect college students and individuals with intellectual disabilities through sport to build friendships and help lead the social justice movement of Special Olympics.

- Special Olympics College Club programs are made up of three core elements: Unified Sports, Youth Leadership, and opportunities for Full Campus Engagement.

Fundraising

Fans and funds are the fuel that service the mission of Special Olympics. How funds are managed are important responsibilities of the Local and State Program. A few examples of some of the established Special Olympics fundraising events that Local Programs could take part in are the Law Enforcement Torch Run[®], Polar Plunge[®], Plane Pull[®], and Over the Edge.

Local Programs fundraise in order to create sustainable programs and encourage quality growth. The very first thing to do prior to engaging in fundraising is to contact the Special Olympics professional support staff through your Special Olympics West Virginia Program's office. They will guide you through the fundraising policies and procedures, as well as provide ideas and strategies to ensure success.

When organizing a fundraising event, the following steps should be followed:

- **Complete and submit a fundraising approval form.**
Before you can begin organizing a fundraising program, it is required by Special Olympics West Virginia to complete a fundraising approval form. This form will ask for basic information, including a simple expense and revenue budget to ensure that net earnings from the fundraising event are worth the Local Program's time and effort. Depending on the type of fundraiser, this form should be completed a minimum of 60 days to six months prior to the event.
- **Build a fundraising event plan.**
Identify the overall fundraising objective – that is, how much you want to raise (gross and net) – and develop a timeline for what needs to be done by when. Be familiar with the Special Olympics West Virginia sponsors and any restrictions you have on contacting existing and/or new sponsors.
- **Recruit, train, and manage volunteers.**
Successful fundraising – particularly special event fundraisers – typically require a group of volunteers assigned to specific tasks. Shared ownership will help to ensure success of the fundraiser. Assign manageable duties to others, train as necessary, monitor progress frequently, make timely adjustments, and have fun!
- **Keep detailed records.**
Make sure that all expenditures reconcile with bills and receipts, and that all revenue reconciles with items sold (such as auction items, raffle tickets, etc.) Use forms provided by the Special Olympics West Virginia office to track expenses and revenue.
- **Deposit funds.**
After an event, all monies received must be deposited into an authorized Special Olympics West Virginia Program account.
- **Thank supporters and sponsors.**
Following a fundraiser, be sure that all supporters and sponsors have been thanked for their contributions. Thank you letter templates and stationery may be available from your Special Olympics West Virginia Program's office. Certificates or plaques may be appropriate depending on the circumstances. Keep track of and continue to engage your supporters and sponsors.
- **Complete post-event evaluations.**
In order to repeat a successful fundraising event, take time to conduct a post event evaluation.

Additional Fundraising Considerations

- All volunteers who handle large sums of money are required to register as Class A Volunteers.
- There are many ways to raise funds. Deciding what is in the Local Program's best interest should be examined closely with your Special Olympics West Virginia Program office. Some common ways to raise funds include:
 - Sponsorships
 - Grants
 - Employee match programs

- Letter writing campaigns
- Memorial gifts
- Special events (i.e. - raffles, auctions, concessions, dinners, garage sales, walk-a-thons, etc.)
- Consider participating in fundraisers already established by your Special Olympics West Virginia office. Leveraging established Special Olympics West Virginia fundraisers tend to be more cost-effective and successful than conducting a new event.
- Be aware of fundraising restrictions. Collaborate with the Special Olympics West Virginia's Development Director before soliciting business for corporate support in order to avoid multiple asks that may aggravate donor prospects and donor relations.
- Fundraising is done to support Local Program teams. Fundraising for a particular athlete – unless approved by the Special Olympics West Virginia Program's office – is strictly prohibited.
- Fundraisers may serve several purposes. Identify the purpose and match the amount of effort that will go into it based on its purpose. For example, a car wash can bring in great awareness; however, the amount of money it raises may be limited. Determine the value and balance the work put into the fundraising effort.
- Fundraising events are not allowed to have any direct affiliation with tobacco or alcohol products. *
- All contractual agreements that address liability require approval by the Special Olympics West Virginia office for them to be considered binding.
- All funds raised by or donated to a Local Program must be deposited into the local program's authorized Special Olympics West Virginia account within five (5) business days of the event.
- Value-in-kind donations should be documented with a receipt to the donor. Your Special Olympics West Virginia Program office will have forms that can be utilized.

*For more information, see <https://resources.specialolympics.org/governance-and-leadership-excellence/special-olympics-general-rules/article-5>

Finance

Accounting for all funds raised and used by your Local Program is important to protect the credibility of Special Olympics brand, as well as to ensure compliance with the Internal Revenue Service (IRS) in the United States (or comparable agency in your country) as a tax-exempt charitable not-for-profit organization.

Oversee & Manage Financial Resources

The following steps should be taken in order to ensure that the Local Program's financial resources are managed appropriately:

- **Identify a Local Program volunteer to manage finances.**
Recruit someone who is capable of helping to budget, manage funds, and report finances as required. Notify the Special Olympics West Virginia Program office as to who has been identified for this role. This person must complete a Class A Volunteer application, and all certifications prior to handling any monies.

- **Create annual revenue and expense budgets.**
Budget what Program activities, training, and competitions your Local Program plans to engage in, and then manage within those parameters. Prepare budgets by consulting the Local Program leadership regarding intended goals, budget expenses, and revenue based on prior performance. Budgets are typically prepared during the third or fourth quarter of the current year for the following year, and will be reviewed and approved by the Special Olympics West Virginia Program prior to implementation.
- **Reconcile expenses and revenue.**
On a monthly basis, reconcile expenses and revenue against the budgets with receipts. Generally, the Special Olympics West Virginia Program will require quarterly reports to ensure that everything is accounted for and balanced.

Additional Financial Considerations

- The finances of each Local Program must be managed through a centralized checking and billing accounting system. Local programs must meet with the Special Olympics West Virginia's Chief Financial Officer or designee to fully understand reporting requirements.
- For Local Programs to be eligible for Special Olympics West Virginia Program funding, they are expected to comply with guidelines and practices for reporting finances, provide annual budgets, and generally be in good standing.
- To be reimbursed for expenses by the Special Olympics West Virginia Program, an approved budget must be in place and a prior agreement must have been established. Receipts must accompany all requests for reimbursements.
- While athletes are prohibited from being charged to participate in Special Olympics per General Rules, Special Olympics West Virginia Program offices may invoice the Local Program for pre-arranged services (such as lodging at State Games). Special Olympics West Virginia will invoice the Local Program and deduct the invoiced amount from the Local Program's funds.
- Local Programs are not permitted to open credit cards, debit cards, bank savings, certificates of deposits (CDs), general investments, or endowments.
- Deposits must be made daily upon receipt of funds. Thank you letters must be sent to all donors.
- All expenditures must have prior approval by the Special Olympics West Virginia Program's office. All expenditures must be paid by check or credit card from an invoice. Personal expenditures are not permitted from Local Program funds under any circumstance. Direct cash withdrawals are not permitted. Receipts must be kept on file for all transactions.
- Capital equipment purchases for non-disposable equipment, or items valued at \$1,000.00 or more, are considered fixed assets and the property of the Special Olympics West Virginia Program. Purchase and disposal or sale of fixed assets must be pre-approved by the Special Olympics West Virginia Program's office. Annually, all equipment must be inventoried and reported to the Special Olympics West Virginia Program's office.

- Keep all receipts on file and submit all receipts with monthly summary reports. Keep all value-in-kind receipts and submit (at least) quarterly. Full-year budget financial records must be forwarded to the Special Olympics West Virginia Program's office by a designated date of the current year.
- Consult your Special Olympics West Virginia Program's office accounting department for support. They can provide assistance with reporting requirements.

Athlete Leadership in Action

What is Athlete Leadership?

Athlete Leadership empowers athletes to develop leadership skills and utilize their voices and abilities to undertake meaningful leadership roles, influence change in the Special Olympics movement, and create inclusive communities around the world. As athletes gain the confidence that comes with achievement, they feel empowered and ready to take on new challenges to make use of all their abilities.

There are various roles athletes might serve in the Local Program. Some roles require meeting certain criteria as well as training. A support mentor can assist the athlete to become more successful and have a more meaningful experience.

Athletes can serve Special Olympics as an Athlete Leader in many roles such as: Local Program Management Team, Global Messenger, Assistant Coach/Coach, Official, Committee Member, and more!

QUESTION: Can you name the roles that these athlete leaders are performing?



Answer Key: Top Row (left to right): Committee Member, Athlete Leader speaking out, Official; Middle Row (left to right): Athlete Promoter, Coach; Bottom Row (left to right): Athlete Congress, Fundraising Team, Cameraman & Journalist.

Part 2: Further Developing Your Local Program

Section 1: How to Grow & Sustain Your Local Program

Planning for Growth

As a Local Program grows, it will have to evolve in order to serve athletes in a quality manner. The goal of all programs is that growth be tied to athlete demand and interest. As more athletes join a Local Program, more sport opportunities will need to be added, practice facilities will need to be larger, the budget will have to increase, and the coach and volunteer base will need to grow. For this reason, it is better to plan for growth when launching a Local Program in order to best accommodate the Local Program's needs as they are discovered.

Enhancing Existing Sports

Consider adding additional training opportunities and sports performance standards to the Local Program to encourage increased performance. Expand the Local Program from just one skill-focused training session per week by adding a second training session focused on fitness and conditioning. Focusing on health to enhance the existing sports programs will assist your athletes in their health and well-being. It is a global initiative of Special Olympics for all athletes to participate in 2 high quality sports opportunities per week.

Adding Unified Sports Options to Already Existing Sports

By partnering with schools, churches, or other community organizations, the Local Program can grow by giving volunteers the option of becoming Unified Sports partners to train and compete alongside Special Olympics athletes.

Adding New Sports

In order to better gauge the popularity of the sports offered by your Local Program and the Special Olympics West Virginia Program, regularly surveying the athletes, coaches, Management Teams, and families is encouraged to obtain the best information and feedback.

In order to make effective decisions in adding a new sport or Program, the following need to be taken into consideration:

Interest

- Determine community interest by hosting a sports demonstration night for local athletes, Unified Sports partners, and coaches. Introduce basic sports skills and determine the community's interest for adding a program or sport
- Brochures within schools, community boards, group homes, and other areas that serve individuals with intellectual disabilities are helpful for increasing awareness and determining interest

Facilities

- Partner with local recreation centers, high schools, and sports organizations in order to obtain access to facilities used for training and competition

Coaches

- Host a volunteer orientation for all new volunteers and introduce coaching opportunities
- Recruit and strategically place coaches where they will best fit

Other Volunteers

- Host or participate in volunteer fairs and trainings within targeted communities to create interest for the Local Program's needs
- Create a volunteer job description for each available position in order to provide specific requirements and job functions for volunteers

Budget

- When determining the Local Program's needs, be sure that the budget provides information about how much revenue the Local Program will need to sustain and/or grow
- All funds must be raised by each individual Local Program – either through fundraising or donations
- Collaboration with your Special Olympics West Virginia Program will help determine the Local Program's budget and ensure that the Program is staying within the parameters of the organization

Determining What Opportunities to Offer

The following opportunities may be added based on your Local Program's capacity and specific needs, along with endorsement from the Special Olympics West Virginia Program.

Young Athletes

Young Athletes is for Special Olympics athletes ages 2-7. It introduces motor skills and basic sports skills to prepare athletes for traditional sports programming of training and competition at age 8.

Young Athletes Resources: <https://resources.specialolympics.org/sports-essentials/young-athletes>
<https://resources.specialolympics.org/governance-leadership-excellence/registration-forms>

Special Olympics Unified Champion Schools®

Special Olympics Unified Champion Schools incorporate Special Olympics sports and related activities while enhancing the youth experience and empowering youth to become agents of change in their communities. This program is a catalyst for promoting inclusion by bringing together students with and without intellectual disabilities in a variety of activities.

The three components of a Unified Champion School are:

- Inclusive Sports Opportunities (Special Olympics Unified Sports®)
- Inclusive Youth Leadership
- Whole School Engagement

Unified Champion Schools Resources:

<https://www.specialolympics.org/our-work/unified-champion-schools>

Athlete Leadership

Athlete Leadership programs provide Special Olympics athletes the opportunity to become advocates for Special Olympics. Athletes are provided with training and the subsequent opportunities to speak publicly, meet with sponsors or donors, and hold leadership positions within the organization.

Through the Leadership program athletes are provided with the opportunity to coach, officiate, and hold positions on Input Councils, Committees, and Boards. These opportunities are the means of developing athletes' abilities beyond those of being a competitor.

Athlete Leadership Resources:

<https://resources.specialolympics.org/governance-and-leadership-excellence/athlete-leadership>

Youth Activation

Youth Activation Committees are an inclusive group of school-aged leaders, both with and without intellectual disabilities. The committee encourages its members to support the Special Olympics West Virginia Program and develop their leadership skills through event participation, volunteer opportunities, and fundraising.

Youth Activation primarily focuses on promoting social inclusion by educating, motivating, and activating youth to become agents of change in their communities and advocate for the respect, inclusion, and acceptance of all people, regardless of abilities. Youth Activation can take many different forms depending on the culture of your Local Program.

Youth Activation Information:

<https://resources.specialolympics.org/community-building/youth-and-school>

Health

Special Olympics Healthy Athletes®

Special Olympics Healthy Athletes is a Special Olympics program that provides free health screenings and health education in a fun, welcoming environment with a focus on removing the anxiety people

with intellectual disabilities often experience when faced with a visit to a medical professional. Healthy Athletes events are led by licensed medical professionals with the support of additional medical professionals and students going into those fields to give them hands on experience working with people with intellectual disabilities.

Healthy Athlete Disciplines:

Fit Feet: <https://resources.specialolympics.org/health/fitfeet>

FUNfitness: <https://resources.specialolympics.org/health/funfitness>

Healthy Hearing: <https://resources.specialolympics.org/health/healthy-hearing>

Health Promotion: <https://resources.specialolympics.org/health/health-promotion>

MedFest: <https://resources.specialolympics.org/health/medfest>

Opening Eyes: <https://resources.specialolympics.org/health/openingeyes>

Special Smiles: <https://resources.specialolympics.org/health/specialsmliles>

Strong Minds: <https://resources.specialolympics.org/health/strongminds>



Healthy Communities

Healthy Communities is a model Special Olympics Health program addressing the severe health disparities faced by people with intellectual disabilities through immediate and long-term community-based solutions. Healthy Communities is working to increase access to quality health care and prevention programming to improve the health status of people with intellectual disabilities.

Healthy Community Resources:

<https://resources.specialolympics.org/health/healthy-communities>

Fitness

Physical fitness is a key part of the Special Olympics mission. Fitness is the state of optimal health and performance through adequate physical activity, nutrition and hydration. In order for our athletes to be fit, they must practice healthy habits year-round and lifelong.

Special Olympics has endorsed 4 fitness models:

<https://resources.specialolympics.org/program-models>

Fit Families & Friends

SOfit

Unified Sports Fitness Clubs

Special Olympics Fitness Guide for Schools

In addition, the Fit 5 materials are available for use: <https://resources.specialolympics.org/health/fitness/fit-5>

These resources have been created for Programs to share with their local programs to implement.

Motor Activities Training Program (MATP)

MATP provides sport opportunities for athletes who may not be able to compete, or are not ready to compete, in official Special Olympics Sports due to the severity of their disability or skill level. Offering MATP is a great way to recruit and ensure that opportunities are provided for all athletes to get involved. MATP is most often conducted within the agency or school systems where athletes reside.

<https://resources.specialolympics.org/motor-activity-training-program>

Section 2: Developing Partnerships

What is a successful partnership approach for Local Program development?

Throughout North America, Local Programs are forging partnerships in their communities in creative and exciting ways. The following information is provided to help you get started with creating your own partnerships with sponsors, volunteers, clubs and organizations, athletes, and others in your community.

Prospects

Identify Potential Prospects

Who aligns with the Special Olympics mission? It is important to think outside of the box!

- Health and insurance companies
 - **Example:** What opportunities might be available for addressing obesity and Special Olympics athletes?
- Prominent companies in your community
- Potential family connections

Identify the value of your Local Program to a company through goals and objectives that the company is trying to meet.

Discover the Key Contact: Gatekeeper vs. Decision- Maker

- Get past the gatekeeper to the decision maker
- Develop a relationship and focus on getting the decision-maker to an event

Network Everywhere

- Keep an open mind
- Always listen for opportunities; all interactions provide an opportunity to share the Special Olympics mission and identify program needs
- Be Positive, on Point, and Persistent
- Many times, you will have to get through a lot of “No’s” before you find the “Yes”
- Be persistent and reframe your ask when necessary
- Develop a YES mentality

Get in the Door

- Look at different levels of engagement; start small
- The first level may be inviting the decision-maker to an event
- Connect the decision-maker with an athlete who can introduce them to Special Olympics
- In the course of conversation with the decision-maker, find out what is important to them as an individual and to their company
- Do not go into the conversation with a specific agenda; listen and develop their involvement together. Create a partnership.

Persistence Pays Off*

*The following statistics are from the National Sales Executives Association.

-
- **2% of first contacts yield results; ask an individual to coffee**
 - **3% of second contacts yield results; take the individual to lunch**
 - **5% of third contacts yield results; invite them to an event such as the Polar Bear Plunge**
 - **10% of fourth contacts yield results; involve the individual in the Polar Bear Plunge as a participant**
 - **80% of 5th-12th contacts yield results; invite their company to become a team in the Polar Bear Plunge**
-

Successful Steps in Getting Results

The following steps are helpful in getting results as your Local Program works to develop partnerships.

Introduction

- Be observant when meeting with a prospect. For example, look around their office and note any pictures, certificates, honors, and/or banners. It's important to do research when seeking to develop a relationship.
- Get comfortable. Be upfront and state the objective of the visit.
- Help your prospect realize what you bring to the table that can be of value to their company.

Fact Finding

- Uncover their needs. Look for the hot buttons and what is meaningful to them.
- Listen 80% of the time and talk 20% of the time.
- Ask drill-down questions. Usually start with:
 - Why? What value does this provide? How would this impact the program?
- Look and listen for clues about their priorities and dislikes.

Tips

- Assume a "Yes." Use "when" instead of "if."
- Do not assume you know an individual nor company's needs.
- Be persistent. Understand that it takes time to build relationships.
- Align your ask within the framework of the company/organization. For example, when introducing inclusive physical education, demonstrate how it can align with a school's existing programming.
- Avoid giving too much information up front.
- Educate rather than sell. Understand and be able to demonstrate the impact of the activity/program, as well as its importance and value.
- Be honest; do not exaggerate numbers.

- Be flexible and open to change.
- Always enter with an open mind and confidence.
- Understand return on investment (ROI). What do you provide that the prospect needs?
- Be prepared!

The Pitch

Prepare your pitch by creating an outline that fits on an index card. Always start by introducing yourself, the organization, and your title. Be sure to explain that you are there because of the athletes.

Present the value of Special Olympics – both facts and anecdotal benefits; balance the two. Be sure to share what you feel will have the greatest impact.

Other tips for preparing your pitch:

- Share the vision, mission, and goals of Special Olympics, as well as the need(s) you are trying to meet.
- Bring an athlete with you so that they may share a personal story and be a part of your pitch.
- Share why **you** got involved – your own personal story
- Describe the impact of Special Olympics on athletes, families, and the community
 - **Example:** Special Olympics athletes are five times more likely to be employed than their peers with intellectual disabilities that have never participated.
 - Through Special Olympics, athletes feel accepted, respected, and have the opportunity to become productive citizens.

Use Special Olympics' Resource Toolkit for Research and Facts:
<https://resources.specialolympics.org/research>
- Outline the impact of their donation in dollars
 - **Example:** 85 cents of every dollar goes directly to supporting athletes.
- Volunteering becomes a team-building activity. This can include volunteering for events, coaching, and/or fundraising opportunities.
- Present an option to get involved in an event or provide year-round sponsorship. See it as a partnership.
- Attend a fundraiser
- Play Unified Sports®
- Provide donation information
- Provide information on how to make a donation
- Direct them to the Special Olympics website
- Provide instructions on how they can get information via social media, such as Facebook or Twitter
- Ask if you can check back with them in two weeks
- Set up a meeting or presentation at site
- Have answers ready for possible objections

- **They already gave:** Offer a team building or volunteer opportunity
- **Hard times:** Offer in-kind/budget relieving options to offset costs
- **The budget is complete:** Find out when budget is due and get in 60-90 days before it's due
- **They are too busy:** Invite to coffee rather than lunch. Convey the need of just 30 minutes and send calendar invite
- **The ask is too large:** Have a menu of funding options to fit all budgets.
- Quantify their impact. Identify number of athletes, parents, and volunteers impacted
 - **Example:** 3,000 volunteers and families were exposed to your company's support, and that support helped showcase the skills and abilities of our 5,000 athletes
- Prepare for the close of the pitch
- Briefly and concisely summarize the ask. Ask directly if you have their support
- Reaffirm the nature of their commitment
- Negotiate – know your worth and stand by it. If you “give away the farm,” there's no incentive for them to increase their support going forward.
- Never over-promise, but always over-deliver
- The Memorandum of Understanding/Agreement can outline roles and responsibilities that are clear and easy to follow. Check with the Special Olympics West Virginia Program for a sample.

The difference between success and failure of one-time support versus ongoing support hinges on making the supporter/sponsor a true partner in your Local Program's success.

How do we make the Supporter or Sponsor a True Partner in the Local Program's Success?

- Develop and deepen the relationship
- Connect with them
- Meet face-to-face
- Engage them with athletes by inviting them to events
- Provide opportunities for athletes to network with other supporters
- Seek their expertise and input as appropriate – involve them!
- Be genuine
- Consistently evolve and reinvent the relationship. Keep it fresh
- Stay true to rights and benefits
- Deliver results promised to the partner
- Provide a thank you and/or small gift that will be meaningful to them
- Call quarterly to touch base and continue to deepen the relationship
- Speak of personal bests – they and athletes can relate to them. This also allows you to deliver the true sports and health impact. This helps them see Special Olympics as a powerful sports organization.
- Challenge their mindsets; educate and enlighten

- Work toward sustainability. Continue to deepen the connection with frequent communication and follow up.

Partnerships with Families

Engaging families in any of the diverse roles in Special Olympics will strengthen your Local Program. Visit the Special Olympics Resources page on families to explore ways to actively engage athletes' families: <https://www.specialolympics.org/our-work/families>

Learn, practice, and improve. Partnerships propel the Program.



Section 3: Using Technology

Technology enables a Local Program to work smarter, more efficiently, and more effectively.

Here are ways technology can be used to benefit a Local Program.

Volunteer Management

Technology and volunteer management systems provide a strong platform for volunteers to learn about Special Olympics and the various ways to get involved. Technology helps volunteers learn about opportunities, register, and monitor progress towards training. It also provides access to applications and allows them to learn of placements. A strong volunteer management system will retain volunteers and help provide ongoing communication and recognition.

Programs can utilize technology to ensure all of the requirements are met for background checks, applications, and training. A volunteer management system allows people to register online and notifies them of deadlines to renew background checks and applications.

A volunteer management system will enable you to keep track of all volunteers and continue to engage them in future events, document volunteer hours, and share important details of volunteer opportunities.

Creating an online presence for volunteer opportunities, and streamlining the process for volunteers to register, will increase the numbers of people engaging in Special Olympics programs. Communicate with your Special Olympics West Virginia Program to assess what opportunities are available for the Local Program to work collaboratively.

Games Management

Each Local Program must use a Games Management System (GMS) to maintain data and performance records on all athletes. This system is also essential to the divisioning process so that athletes are entered into the appropriate division, which ensures that they are competitive and results in the most positive experience at all levels.

The official SOI website provides a resource on the use of the GMS. It contains training videos, downloads, and tips:

http://resources.specialolympics.org/Topics/Games/GMS/GMS_Learning_Center.aspx

Communications & Marketing

Social Media

Social media can be a powerful and cost-effective way to reach a broad audience.

What is Social Media?

What defines and constitutes social media is constantly evolving and changing. Social media is a form of communication that is comprised of platforms that allow for the two-way sharing of information. Information shared on social media includes text posts, photos, audio, and visual media. Social media



is comprised of multiple platforms such as Facebook, YouTube, Flickr, Instagram, Twitter, Pinterest, Snapchat, and more.

Social Media Policy

It is important to have guidelines when using social media within the Local Program. Discuss this with the Special Olympics West Virginia Program to obtain their policy. Share this information with the Local Program athletes, coaches, families, and volunteers.



Using Social Media

Special Olympics uses social media as a way to connect with current and potential athletes, coaches, donors, volunteers, parents, and the general public. Social media can be used to promote awareness of the Local Program.

Helpful Social Media Guidelines

Social sites are just that – social. While privacy does not exist in the world of social media, almost every social media platform has privacy settings that can help protect your privacy.

Your personal and professional life could overlap when what is shared becomes part of the public domain, and may reflect on the author personally and/or professionally. Remember, even after being deleted, comments and posts continue to live online in archival systems.

Using All Social Media Platforms (Including Personal Use)

Always protect confidential and proprietary information. Do not publish confidential information about Special Olympics athletes, staff, volunteers, families, community partners or sponsors.

Be mindful of copyright and intellectual property rights of others and of Special Olympics. Individual bloggers and webmasters may be held accountable for the information that they publish on their sites if it is illegal, defamatory, copyrighted, etc.

Delete any profane or derogatory comments on your personal social media pages. Always report posts that you feel are threatening, harassing, or inappropriate.

Respect the privacy of others. Do not publish or tag photos of others without their permission. Avoid publishing someone's last name, school, or place of employment on social media if you do not have their permission. It is important to note that what you publish may be subject to public disclosure in legal proceedings.

Using Social Media Internally

- You should only make a social media account in the name of a Special Olympics Local Program with prior approval and guidance from the Special Olympics West Virginia Program, following their social media, digital media and website protocols.
- A SOWV Staff member must be an additional admin on any social media account in the name of a Special Olympics Local Program.
- If someone asks you a question outside of your expertise on social media, direct the person to the proper resource. Do not act as a spokesperson.
- Refer all requests for acknowledgement or comment to the Special Olympics West Virginia Program.
- Social media is highly visual. Sharing information, photos, and videos is commonplace.

- Remember that organizational policies regarding the use of photos and images apply online as well as in print.

Representing the Special Olympics Accredited Brand Online

- At no point should Special Olympics accounts be used for the purpose of expressing personal or political beliefs or opinions. Keep your personal views separate.
- Avoid conflicts of interest and maintain a distinction between your personal identity and the identity you represent on behalf of Special Olympics.
- Do not comment anonymously, conceal, or misrepresent your identity in your online activities.
- Do not use the Special Olympics name or logo to promote or endorse any product, religion, cause, political party, or candidate.
- When instances of misinformation occur in social media posts or comments, respond with facts and data.
- Avoid arguments and confrontations online. If you see a comment that would warrant an official response from Special Olympics, contact your Special Olympics West Virginia Program.
- Use the Special Olympics logo in accordance with branding guidelines set forth in the SOI Branding Standards online: <https://media.specialolympics.org/resources/brand-awareness-and-communication/branding/brand-guidelines/Brand-Identity-Guidelines-2018.pdf>
- Monitor your social media accounts on a daily basis to look for inappropriate posts and to respond to questions and comments as needed – remember, social media is a dialogue, not a one-way communication.

Other Means of Using Technology

Technology can be used in many ways to bolster a Local Program. If your Special Olympics West Virginia Program's website does not have the capability of sharing files, considering using one of the following free online tools.

Dropbox*

- Create folders with meaningful headings
- Add section titles to create a path of reference
- Add to your Dropbox account, then continue to add or make changes

Google Docs*

- Easily edit and style with tools to help format text/documents
- Choose from hundreds of fonts and add links, images, drawings, tables, etc.
- Access, create, and edit your documents wherever you go – from your phone, tablet, or computer

Remind*

- Remind is a free, web-based application that provides means of statewide communication to athletes, coaches, and parents in real time
- A one-way text by a proprietor (your Local Program) can yield a mass alert
- The Remind app can be downloaded for iOS or Android



Sample folders your Local Program may create and share include:

- GMS
- PDF division (heat) sheets
- Fundraising event instructions
- Program and Local Program calendar(s)
- Local Program Guide
- Sports Information Guide
- Sports Rules

*NOTE: Special Olympics does not endorse these products, but is citing them for the purposes of illustration.





Part 3: Resources

The Special Olympics Resources site is a self-service website that includes a variety of tools and valuable resources. Local Programs should contact the Special Olympics West Virginia Program for additional resources.

View Special Olympics WV Resources: <https://sowv.org> or <http://resources.specialolympics.org/ResourcesDefault.aspx>

Sample Checklists, Tools, and Best Practices

The following resources are offered as suggestions based on Local Program needs. You may customize the forms in this Resources section to suit your individual needs. Please check with the Special Olympics West Virginia Program to determine if they have an alternate form for these resources that can be utilized by the Local Program.

- Local Program Management Team Position Descriptions
- Local Program Management Team Training Checklists
- Sport Training and Competition Checklist
- Codes of Conduct - Athletes, Coaches, Family Members
- Developing an Emergency Management Plan
- Incident Action Steps Card
- Inclement Weather Policy



Local Program Management Team Position Descriptions

Local Program Coordinator

The Local Program Coordinator is responsible for providing strategic leadership and managerial responsibilities for the Local Program. The Local Program Coordinator plans, organizes, directs, and coordinates programs and services for the athletes in their Local Program in accordance with established policies to achieve the goals, objectives, standards, and mission of Special Olympics. The completion of responsibilities will be performed by the Local Program Coordinator and Management Team members who have been empowered to lead and complete the specific functions outlined below.

Sports & Competition Coordinator

The Sports & Competition Coordinator is responsible for administration, planning, and assisting in the delivery of a Local Program's quality training and competition events for Special Olympics athletes and Unified Sports® partners.

Administrative/Operations Coordinator

The Administrative/Operations Coordinator is responsible for ensuring that all Special Olympics paperwork, policies, and procedures are adhered to so that athletes may train and compete, coaches can volunteer, and Unified Sports® partners can participate. The Administrative/Operations Team also oversees all data input into the Games and Volunteer Management Systems.

Finance Coordinator

The Finance Coordinator and their team are responsible for all aspects of the financial administration for the Local Program. They also ensure that special events and fundraisers are following the Special Olympics West Virginia Program's financial guidelines.

Fundraising Coordinator

Based on budgetary needs, the Fundraising Coordinator is responsible for developing dynamic and creative ways to secure new sponsors, execute fundraising programs and events, and build relationships within the community.

Outreach Coordinator

The Outreach Coordinator is responsible for all aspects of children, youth, and adult athlete recruitment. The Outreach Coordinator works with schools, transitional programs, families, community sports programs, adult vocational settings, group homes, and governmental organizations in order to connect eligible athletes in the communities with Special Olympics Local Programs within the geographic area.

Communications Coordinator

The Communications Coordinator is responsible for promoting awareness of what people with intellectual disabilities can achieve through participation in Special Olympics through all forms of media.

Volunteer Coordinator

The Volunteer Coordinator is responsible for recruiting, registering, matching, training, and coordinating all volunteers – including athlete leaders. They ensure that there are adequate numbers of volunteers by roles, and that volunteers meet eligibility requirements as mandated by their roles (coach, partner, leadership, etc.).

Unified Champion School Coordinator

The Unified Champion School Coordinator develops and implements Special Olympics Unified Champion School programs in schools within a geographic area. They recruit, educate, and mentor school personnel to develop and implement Unified Champion Schools components and Young Athletes™ in schools.

Athlete Leadership Coordinator

The Athlete Leadership Coordinator oversees athlete leadership and ensures that there is an active Athlete Input Council, that year-round workshops are offered, and athlete leaders are recruited, trained, and engaged in all aspects of programming and governance within the Local Program.

Young Athletes™ Coordinator

The Young Athletes™ Coordinator recruits community and school-based young athletes, registers, assists with securing equipment, and troubleshoots culminating event activities. They work with the Administration Team in registering these Young Athletes™. The team also ensures the training of all Young Athletes™ Coordinators.

Athlete Representative

The Athlete Representative is an athlete from the Local Program's Input Council who brings information from the council to the Local Program's Management Team and reports back to the council, as well as offers insights on programming from the athlete perspective.

Family Services Coordinator

The Family Services Coordinator is responsible for encouraging and coordinating families' involvement in Local Program activities by providing local resources, hospitality areas at local competitions, picnics, or other social activities to network with other families. They also coordinate workshops to educate families about Special Olympics and other topics of interest.

Wellness/ Fitness Coordinator

The Wellness/Fitness Coordinator is responsible for coordinating year-round fitness, health promotion, and access to health and fitness resources for athletes, families, caregivers, and volunteers.

Local Program Management Team Training Checklist

The following represents a sample checklist to train individuals for various jobs. It identifies the requirements of each position including roles and responsibilities.

All Positions

- Special Olympics Mission
- Special Olympics General Orientation
- Special Olympics Structure: Special Olympics West Virginia Program; North America; Special Olympics, Inc.
- Protective Behaviors
- Concussion Education

Local Program Coordinator Assistant Local Program Coordinator

- Policies and Procedures
- Athlete Medical Requirements
- Volunteer Screening (Class A Requirements)
- Storage / P.O. Box / Phone
- Finance Procedures
- Public Relations (PSAs, press releases, emergency/crisis communication plan)
- Insurance information for facilities, rental vehicles (certificate)
- Risk Management
- Incident Report Forms
- Contracts (process for approval)
- Applications for Participation (Medical Forms)
- Sign-up Procedures per Sport Season
- Volunteer Management System software
- Games Management System software
- Travel Procedures and Needs
- Facilitating monthly meetings (sample agenda)
- Procedure for providing info to potential new athletes
- Procedure for providing info to potential new volunteers



Sports

- Athlete Medical Requirements
- Athlete Training Requirements
- Advancement Criteria: Regional > State > USA Summer Games > World Games
- Athlete: Coach Ratio Requirements
- SO Special Olympics West Virginia Program Rules, NGB Rules and where to find them
- Uniform and Equipment Requirements / how to obtain what is needed; use of logo
- Volunteer Class A Requirements
- Coach Education Requirements and Opportunities
- Unified Sports® – philosophy
- Sports Calendar – Deadlines and where to find them
- Pre-Season Coach Meeting Agenda
- Seasonal Sign-up Procedure
- Coach binders, what they should contain, and where to find that information
- Code of Conduct for Athletes, Unified Sports® partners, coaches, and families
- Secure storage of medicals (print/scanned and digital) as back-up
- Finance Procedures, approval for spending, and/or cash advance for travel
- Public Relations, including emergency communication plan
- Insurance info for facilities, rental vehicles (certificate), and fundraising events
- Risk Management
- Incident Report Forms
- Reserving Facilities / Contracts
- Volunteer Management System software
- Games Management System software
- Travel Procedures and Needs
- Communicating with Coaches
- Procedures for dealing with misconduct of athletes, partners, coaches, volunteers, and/or families
- Ensuring equipment and uniforms are distributed prior to competition and collected immediately after
- Emergency/crisis communication plan
- Procedure for providing info to potential new athletes and new partners
- Procedure for providing info to potential new volunteer
- Procedure for moving a Class B Volunteer into a data management system

Volunteers

- Class A Volunteer Requirements (volunteer screening)
- Class B Volunteers – Day of Volunteering (requirements and restrictions)
- Risk Management
- Athlete Medical Requirements
- Secure storage of medicals (print/scanned and digital) as back-up
- Finance Procedures as it relates to expenses
- Volunteer Management System
- Games Management System, including information regarding volunteer eligibility
- Procedure for providing info to potential new athletes
- Procedure for providing info to potential new volunteers

Before the Start of the Season

- Determine which volunteers will need application renewals
- Update information and request renewals
- Ensure that new volunteers complete Class A Volunteer required paperwork

New Volunteers: Becoming Class A Volunteer Approved

- Complete Class A Volunteer application form
- Complete Special Olympics General Orientation (optional), Protective Behaviors, and Concussion Training
- Volunteers must be Class A Volunteer approved before undertaking any responsibilities with athletes
- Ensure all coaches have a valid Class A Volunteer form
- Check athlete eligibility
- Social security number (SSN) – Individual must provide SSN for background check

Medicals (Applications for Participation)

- Class A Volunteer Requirements (volunteer screening)
- Athlete Medical Requirements*
- Secure storage and back-up storage of medicals (digital)
- Procedure for providing info to potential new athlete
- Data entry

****Checklist for Medicals***

- Ensure medicals are complete
- If medicals are not complete, do not accept; send back and get corrections
- If medicals are complete, make a copy and send in original OR keep the original and submit to Special Olympics Special Olympics West Virginia Program

Before the Start of the Season

- Determine which athletes will need renewals
- Send renewal request letter and blank medical form (personalized for the Local Program) to athletes requiring renewals for the upcoming season
- Work with Management Team at pre-season sign-up to ensure that all involved have valid medicals

Fundraising

- Special Olympics West Virginia Program's Policies and Procedures related to fundraising restrictions
- LETR, Tip a Cop, Polar Plunge, and Revenue Share
- Memorials – including how SO Program handles acknowledgement to family of deceased and the donor
- Program's Special Events
- Thank You's and Receipts
- In-Kind Donations and Procedures
- Finance Procedure as it relates to expenses, deposits, and cash on site
- Roles of fundraising: Class A or Class B Volunteer requirements
- Public Relations – including PSAs, press releases, emergency/crisis communication plan, use of logo, and social media
- Insurance info for facilities, rental vehicles (certificate)
- Contracts (process for approval)

Communications

- Policies and Procedures
- Athlete Medical Requirements
- Class A Volunteer Requirements, including volunteer screening
- Risk Management
- Finance Procedures related to expenses
- Public Relations – including PSAs, press releases, emergency/crisis communication plan, and use of logo
- Contracts (process for approval)
- Sign-up Procedures per Sport Season
- Thank you notes
- Newsletters / mailings
- Social media
- Website protocol/requirements and the Special Olympics West Virginia Program

Sport Training & Competition Checklists

Checklist for Training Sites

Logistics

- Facilities arranged and evaluated for safety and accessibility
- Equipment procured and prepared
- Length of practice
- Time of day for practice
- Availability of coaches and volunteers
- Communication of dates and times to athletes
- Documentation of scores or assessments

Athletes

- Number involved
- Age level and maturity
- Skill level
- Adjusting for different skill levels
- Preparedness for potential injuries

Safety

- Practice conditions
- Water available
- Weather Conditions
- Hazard-free playing surface
- Equipment in proper condition
- Emergency procedures
- Medical forms on site

Skills to Be Learned

- Physical
- Motor
- Technical
- Mental

Delivery of Instructions

- Key points
- Teaching methods
- Position of athletes: Not facing the sun, athlete needs such as hearing or vision, etc.
- Delegation of volunteers and assistant coaches
- Intervention for behavior or crisis
- Positive feedback and support
- Progression throughout the session:
 - Easy to difficult
 - Slow to fast
 - Unknown to known
 - General to specific

Organization of Practice

- Warm-ups (body and skills)
- Review previously taught skills
- Introduce new skills
- Game or event situation; competitive experience
- Cool down and team talk
- Cell phone numbers of chaperones and coaches
- Emergency contact information for chaperones and coaches

Other

- Communication with parents, coaches, and event staff
- Coordination with Special Events

Competition – Outdoor Events Checklist

FACILITY	
<p>Outdoor Competition Area:</p> <ol style="list-style-type: none"> Repairs, refinishing, or re-sodding maintenance current (e.g. field free of large divots, holes, obstructions or protruding objects) <input type="checkbox"/> Yes <input type="checkbox"/> No Competition area is clearly marked and free of trash, debris, or hazardous objects <input type="checkbox"/> Yes <input type="checkbox"/> No Out-of-bounds is clearly marked and free of debris <input type="checkbox"/> Yes <input type="checkbox"/> No Adequate buffer area between competitors and spectators <input type="checkbox"/> Yes <input type="checkbox"/> No Goal post, goalie cages, baseball bases, etc. installed properly <input type="checkbox"/> Yes <input type="checkbox"/> No Standing water drained or removed from the competition/spectator area <input type="checkbox"/> Yes <input type="checkbox"/> No Competition area contains adequate lighting (if appropriate) <input type="checkbox"/> Yes <input type="checkbox"/> No <p>Areas Adjacent to Competition Area:</p> <ol style="list-style-type: none"> Adequate number of waste containers in place <input type="checkbox"/> Yes <input type="checkbox"/> No Areas are free of slip, trip and fall hazards <input type="checkbox"/> Yes <input type="checkbox"/> No Water fountain areas are free of puddles, algae build up and/or mud <input type="checkbox"/> Yes <input type="checkbox"/> No Barriers to protect spectators are adequate and in good condition <input type="checkbox"/> Yes <input type="checkbox"/> No Restrooms are available and clean <input type="checkbox"/> Yes <input type="checkbox"/> No 	<p>Bleachers:</p> <ol style="list-style-type: none"> Footers are blocked appropriately and do not move <input type="checkbox"/> Yes <input type="checkbox"/> No Vertical openings between guardrails, footboards and seatboards are less than four inches <input type="checkbox"/> Yes <input type="checkbox"/> No Metal bleachers are free of corrosion and/or damage <input type="checkbox"/> Yes <input type="checkbox"/> No Wood bleachers are free of dry rot and/or damage <input type="checkbox"/> Yes <input type="checkbox"/> No Transitional areas are clearly marked and free of obstructions, protruding objects, trash and debris <input type="checkbox"/> Yes <input type="checkbox"/> No Handrails, seats and supports are securely fastened <input type="checkbox"/> Yes <input type="checkbox"/> No Wood seats and handrails are free from splinters <input type="checkbox"/> Yes <input type="checkbox"/> No Bleachers appear sturdy enough for anticipated loads <input type="checkbox"/> Yes <input type="checkbox"/> No <p>Parking Lot:</p> <ol style="list-style-type: none"> Lighting appears adequate <input type="checkbox"/> Yes <input type="checkbox"/> No Area is free of slip, trip and fall hazards <input type="checkbox"/> Yes <input type="checkbox"/> No Security is present <input type="checkbox"/> Yes <input type="checkbox"/> No <input type="checkbox"/> N/A
EMERGENCY RESPONSE	
<p>First Aid Equipment Checklist:</p> <ul style="list-style-type: none"> <input type="checkbox"/> List of athletes with special conditions (asthma, diabetes, etc.) <input type="checkbox"/> List of emergency phone numbers <input type="checkbox"/> Adhesive bandages with gauze pads – assorted sizes <input type="checkbox"/> Antiseptic <input type="checkbox"/> Arm sling (triangular bandage is fine) <input type="checkbox"/> Bandage scissors <input type="checkbox"/> Butterfly closures <input type="checkbox"/> Cotton swabs <input type="checkbox"/> Elastic tape <input type="checkbox"/> White tape <input type="checkbox"/> Elastic wraps <input type="checkbox"/> Emergency blanket <input type="checkbox"/> Latex gloves (multiple pairs) <input type="checkbox"/> Plastic bags and bags for ice packs <input type="checkbox"/> Sterile Water <input type="checkbox"/> Resuscitation (CPR) masks/face shield 	<p>Access to Emergency Service:</p> <ol style="list-style-type: none"> Telephones and the appropriate emergency numbers are accessible <input type="checkbox"/> Yes <input type="checkbox"/> No There is adequate passage for emergency vehicles <input type="checkbox"/> Yes <input type="checkbox"/> No Athletes' medical history forms are on site <input type="checkbox"/> Yes <input type="checkbox"/> No Athletes' emergency contact lists are on site <input type="checkbox"/> Yes <input type="checkbox"/> No



Competition – Indoor Events Checklist

COMPETITION AREAS	
<p>Competition Area:</p> <ol style="list-style-type: none"> 1. Competition area is dry and free of obstructions and protruding objects <input type="checkbox"/> Yes <input type="checkbox"/> No 2. Competition area is clearly marked <input type="checkbox"/> Yes <input type="checkbox"/> No 3. Competition area contains adequate lighting <input type="checkbox"/> Yes <input type="checkbox"/> No 4. Out-of-bounds areas are clearly marked and free of obstructions, protruding objects, trash and debris <input type="checkbox"/> Yes <input type="checkbox"/> No 5. Adequate buffer area between competitors and spectators <input type="checkbox"/> Yes <input type="checkbox"/> No 6. Sport apparatus/equipment is secure and in good physical condition <input type="checkbox"/> Yes <input type="checkbox"/> No 7. Non-essential equipment removed from competition area <input type="checkbox"/> Yes <input type="checkbox"/> No 8. Emergency exits are adequate, unobstructed and clearly marked <input type="checkbox"/> Yes <input type="checkbox"/> No 	<p>Locker/Shower Rooms:</p> <ol style="list-style-type: none"> 1. Locker/shower room appears sanitary (e.g. free of algae buildup, floor is dry) <input type="checkbox"/> Yes <input type="checkbox"/> No 2. Water temperature is monitored (e.g. scald protection devices installed in the shower or coach/chaperone assist with water temperature) <input type="checkbox"/> Yes <input type="checkbox"/> No 3. Lockers are properly secured and free of laceration exposures <input type="checkbox"/> Yes <input type="checkbox"/> No 4. Housekeeping in locker room area is in order (e.g. clothing and athletic equipment is properly stowed in lockers) <input type="checkbox"/> Yes <input type="checkbox"/> No 5. Locker/shower room contains emergency lighting <input type="checkbox"/> Yes <input type="checkbox"/> No 6. Emergency exits are adequate, unobstructed and clearly marked <input type="checkbox"/> Yes <input type="checkbox"/> No 7. Shower rooms are free of laceration exposures <input type="checkbox"/> Yes <input type="checkbox"/> No
FACILITY	
<p>Facility:</p> <ol style="list-style-type: none"> 1. Exits and entrances are adequate, unobstructed and clearly marked <input type="checkbox"/> Yes <input type="checkbox"/> No 2. Facility contains emergency lighting <input type="checkbox"/> Yes <input type="checkbox"/> No 3. Power supply cords are free of frayed wires and do not create trip and fall hazards (e.g. extension cords taped to the floor) <input type="checkbox"/> Yes <input type="checkbox"/> No 4. Access to electrical systems restricted (e.g. individual to monitor the electrical system or keep the system locked at all times) <input type="checkbox"/> Yes <input type="checkbox"/> No 5. Interactive attractions properly installed and supervised (e.g. inflatable rides) <input type="checkbox"/> Yes <input type="checkbox"/> No 6. Sufficient waste containers are provided <input type="checkbox"/> Yes <input type="checkbox"/> No 7. Water fountain areas are free of puddles, algae buildup and/or mud <input type="checkbox"/> Yes <input type="checkbox"/> No 8. Smoke detectors/heat detectors/fire alarms/fire extinguishers (present and operational) <input type="checkbox"/> Yes <input type="checkbox"/> No 9. Facility is handicap accessible <input type="checkbox"/> Yes <input type="checkbox"/> No <p>Parking Lot:</p> <ol style="list-style-type: none"> 1. Lighting appears adequate <input type="checkbox"/> Yes <input type="checkbox"/> No 2. Area is free of slip, trip and fall hazards <input type="checkbox"/> Yes <input type="checkbox"/> No 3. Security is present <input type="checkbox"/> Yes <input type="checkbox"/> No <input type="checkbox"/> N/A 	<p>Walkways, Steps, Stairs, Ramps:</p> <ol style="list-style-type: none"> 1. Walking areas are clearly marked and free of obstructions, protruding objects, trash and debris <input type="checkbox"/> Yes <input type="checkbox"/> No 2. Walkways contain adequate and operable lighting <input type="checkbox"/> Yes <input type="checkbox"/> No 3. Handrails are securely fastened <input type="checkbox"/> Yes <input type="checkbox"/> No 4. Stairs contain a non-slip material <input type="checkbox"/> Yes <input type="checkbox"/> No 5. Stairs/steps are free of clutter and debris <input type="checkbox"/> Yes <input type="checkbox"/> No 6. Sufficient waste containers are provided <input type="checkbox"/> Yes <input type="checkbox"/> No 7. Exits and entrances are adequate, unobstructed and clearly marked <input type="checkbox"/> Yes <input type="checkbox"/> No <p>Bleachers:</p> <ol style="list-style-type: none"> 1. Footers are blocked appropriately and do not move <input type="checkbox"/> Yes <input type="checkbox"/> No 2. Vertical openings between guardrails, footboards and seatboards are less than four inches <input type="checkbox"/> Yes <input type="checkbox"/> No 3. Metal bleachers are free of corrosion and/or damage <input type="checkbox"/> Yes <input type="checkbox"/> No 4. Wood bleachers are free of dry rot and/or damage <input type="checkbox"/> Yes <input type="checkbox"/> No 5. Transitional areas are clearly marked and free of obstructions, protruding objects, trash and debris <input type="checkbox"/> Yes <input type="checkbox"/> No 6. Handrails, seats and supports are securely fastened <input type="checkbox"/> Yes <input type="checkbox"/> No 7. Wood seats and handrails are free from splinters <input type="checkbox"/> Yes <input type="checkbox"/> No 8. Bleachers appear sturdy enough for anticipated loads <input type="checkbox"/> Yes <input type="checkbox"/> No

EMERGENCY RESPONSE

First Aid Equipment Checklist:

- List of athletes with special conditions (asthma, diabetes, etc.)
- List of emergency phone numbers
- Adhesive bandages with gauze pads – assorted sizes
- Antiseptic
- Arm sling (triangular bandage is fine)
- Bandage scissors
- Butterfly closures
- Cotton swabs
- Elastic tape
- White tape
- Elastic wraps
- Emergency blanket
- Latex gloves (multiple pairs)
- Plastic bags and bags for ice packs
- Sterile Water
- Resuscitation (CPR) masks/face shield

Access to Emergency Service:

1. Telephones and the appropriate emergency numbers are accessible
 Yes No
2. There is adequate passage for emergency vehicles
 Yes No
3. Athletes' medical history forms are on site
 Yes No
4. Athletes' emergency contact lists are on site
 Yes No



Codes of Conduct

The following are sample codes of conduct for Local Programs. Check with your Special Olympics West Virginia Program to see which Code of Conduct is currently in use.

Special Olympics Athlete Code of Conduct

Special Olympics is committed to the highest ideals of sport and expects all athletes to honor sport and the mission and vision of Special Olympics. All Special Olympics athletes and Unified Sports® partners agree to the following code:

Sportsmanship

- I will practice good sportsmanship.
- I will act in ways that bring respect to me, my coaches, my team, and Special Olympics.
- I will not use bad language.
- I will not swear or insult other persons.
- I will not fight with other athletes, coaches, volunteers, or staff.

Training & Competitions

- I will train regularly.
- I will learn and follow the rules of my sport.
- I will listen to my coaches and the officials, and ask questions when I do not understand.
- I will always try my best during training, divisioning, and competitions.
- I will not hold back in preliminary competitions just to get into an easier finals competition division.

Responsibility for My Actions

- I will not make inappropriate or unwanted physical, verbal, or sexual advances on others in person or through any form of communication (social media, email, phone calls, etc.)
- I will not bully or harass any individual.
- I will not smoke in non-smoking areas.
- I will not drink alcohol or use illegal drugs at Special Olympics events.
- I will not take drugs for the purpose of improving my performance.
- I will obey all laws and Special Olympics rules, the International Federation, and the National Federation/Governing Body rules for my sport(s).

I understand that if I do not obey this Code of Conduct, I will be subject to a range of consequences by my Program or a Games Organizing Committee, up to and including not being allowed to participate.

Special Olympics Coach Code of Conduct

Special Olympics is committed to the highest ideals of sport and expects all coaches to honor sport and the mission and vision of Special Olympics. All Coaches agree to observe the following:

Respect for Others

- I will respect the rights, dignity, and worth of athletes, coaches, volunteers, friends, and spectators in Special Olympics.
- I will treat everyone with respect and equally, regardless of gender, sexual orientation, gender identity, ethnicity, nationality, race, age, religion, disability or ability.

Ensure A Positive Experience

- I will ensure that for each athlete I coach, the time spent with Special Olympics is positive.
- I will respect the talent, developmental stage, and goals of each athlete.
- I will ensure each athlete competes in events that challenge that athlete's potential and are appropriate to that athlete's ability.
- I will be fair, considerate, and honest with athletes.
- I will ensure that accurate scores are provided for entry of an athlete into any event.
- I will instruct each athlete to perform to the best of the athlete's ability at all preliminary competitions and finals competition in accordance with the Special Olympics Sports Rules.

Act Professionally and Take Responsibility for My Actions

- My language, manner, punctuality, preparation, and presentation will demonstrate high standards.
- I will display control, respect, dignity, and professionalism to all involved in the sport.
- I will encourage athletes to demonstrate the same qualities.
- I will not drink alcohol, smoke, or take illegal drugs while representing Special Olympics at training sessions or during competition.
- I will refrain from any form of personal abuse towards athletes and others – including verbal, physical, and emotional abuse, whether in person or through any form of communication (social media, email, phone calls, etc.)
- I will not bully or harass any individual.
- I will be alert to any form of abuse from other sources directed towards athletes in my care.

Quality Service to The Athletes

- I will seek continual improvement through performance evaluations and ongoing coach education.
- I will be knowledgeable about the Sports Rules and skills of the sport(s) I coach.
- I will provide a planned training program for individual practices and the season.
- I will keep copies of the medical, training, and competition records for each athlete I coach.

Special Olympics Family Member Code of Conduct

We hope as family members, you will embrace the spirit of Special Olympics and help to provide a competition and training environment that enhances athlete character and skill development. The following Family Code of Conduct should be emphasized during training, competition, and special events at any level – including sub-Program, Special Olympics West Virginia Program, National, Regional and World.

As a Special Olympics family member, I pledge the following:

- I will let my athlete choose the sports in which he/she would like to participate. I will not force my choice upon him/her.
- I will remember that athletes participate to have fun and that the game is for them; not for the family members.
- I will see to it that my athlete's medical form is up-to-date, complete, and on file.
- I will learn the rules of the game and the SOI policies before I complain or protest.
- I (and my guests) will be a positive role model for my athlete and encourage sportsmanship by showing respect and courtesy, and by demonstrating positive support for all athletes, coaches, officials, and spectators at every game, practice, or competition.
- I understand that I play a vital role in the health and safety of my athlete's participation. I have a responsibility to assist Special Olympics in providing for the health and safety of all athletes by reporting suspicious behavior, talking to my child about personal safety, dropping off and picking up my child/guard from Special Olympics events at the times designated by the organization (not excessively earlier or later than said established times), and any and all other reasonable measures to assist in the protection of Special Olympics athletes.
- I (and my guests) will never engage in any kind of unsportsmanlike conduct, such as booing and taunting, refusing to shake hands, or using profane language and gestures with any official, coach, or family member.
- I will never encourage any behaviors or practices that would endanger the health and well-being of the athletes.
- I will not make inappropriate or unwanted physical, verbal, or sexual advances on others, in person or through any form of communication (social media, email, phone calls, etc.)
- I will not bully or harass any individual.
- I will teach my athlete to play by the rules and to resolve conflicts without resorting to hostility or violence.
- I will demand that my athlete treat other athletes, coaches, officials, and spectators with respect, regardless of race, creed, color, sex, or ability.
- I will teach my athlete that doing one's best is more important than winning, so that my athlete will never feel defeated by the outcome of a game or his/her performance.
- I will praise my athlete for competing fairly and trying hard, and I will make my athlete feel like a winner every time.

- I will never ridicule or yell at my athlete or other participants for making a mistake or losing a competition.
- I will emphasize skill development and practices, and how they benefit my athlete over winning. I will also de-emphasize games and competition in lower age groups.
- I will promote the emotional and physical well-being of the athletes ahead of any personal desire that I may have for my athlete to win.
- I will respect the officials and their authority during games and competition, and will never question, discuss, or confront coaches during competitions. Instead, I will take time to speak with coaches at an agreed upon time and place.
- I will demand a sports environment for my athlete that is free from drugs and alcohol, and I will refrain from their use at all sports events and competitions.
- I will smoke/chew tobacco only in designated areas.
- I will refrain from coaching my athlete or other athletes during competitions and practices if I am not the assigned coach.

As a Special Olympics Special Olympics West Virginia Program family member, I also understand that if I fail to abide by the aforementioned rules and guidelines, I may be subject to disciplinary action that could include, but may not be limited to, the following:

- Verbal warning by officials, coaches, and/or sub-Program and Special Olympics West Virginia Program personnel
- Game suspension with written documentation of incident kept on file in the Special Olympics West Virginia Program Office
- Written warning
- Game forfeit through official or coach
- Season suspension
- Misbehavior Report submitted to Event Director

Copies of all these forms can be found at www.sowv.org

Developing an Emergency Management Plan

Considerations

- Ideally, a physician, an athletic trainer, or a physical therapist knowledgeable in the triage and immediate management of athletic injuries should cover practices and games.
- The coach should provide the athletes' medical forms and any special instructions to medical personnel.
- An emergency medical technician (EMT) and ambulance should be available immediately upon calling.
- The coaching staff should be educated and skilled in immediate management designed to contain the extent of the illness/injury until appropriate medical personnel are available.
- The coach and all personnel should be certified in cardiopulmonary resuscitation (CPR) and first aid.

Each coach is responsible for activating an Emergency Management Plan

- The coach should assess the situation as quickly as possible after an incident has occurred.
- The coach should assess the incident right where it occurred, determining whether the athlete can be safely moved.
- The coach should know the athlete and his/her personality to best assess injury versus reaction.
- The coach should remain calm, which will also serve to keep the athlete and others calm.
- The coach should listen to the athlete describe what happened.
- The coach should ask simple, clarifying questions.
- The coach should observe the athlete's face and eyes while talking.
- The coach should observe for any asymmetry, trauma, general body alignment, and functional abilities.
- The coach should survey the area where the injury occurred for any unsafe articles or terrain.
- The coach should evaluate the criticality of the situation, and then institute action based on the evaluation of the situation.
- The primary survey of the athlete evaluates airway, breathing, circulation, and consciousness.
- The secondary survey of the athlete evaluates the seriousness of all other injuries once it is determined that the athlete is breathing and alert, with good cardiac function.
- If no medical personnel are available, the coach should respond based on his/her assessment of the criticality of the situation.
- When in doubt, do not put the athlete back into play.
- Always refer to a healthcare professional for additional follow-up.



Crisis Communication Plan

The difference between crisis and emergency is that crisis is a crucial or decisive point or situation, a turning point, while emergency is a situation which poses an immediate risk and which requires urgent attention. If this is a life-threatening injury or crisis, the Special Olympics West Virginia Program President and CEO and Director of Sports and Training should be contacted immediately.



Incident Immediate Action Steps Guide

Each serious health and/or safety incident is unique and requires a particular set of responses. As a representative of Special Olympics Special Olympics West Virginia Program, it is your responsibility to do what is reasonable under the given circumstances. While this guide cannot address every possible scenario, it provides you with basic action steps to take or consider taking **IMMEDIATELY** after an incident has occurred or commenced. Please make sure to fill in the phone numbers below prior to sanctioned events or travel.

In the event of an incident, follow the guidelines below, keeping everyone involved as calm as possible throughout.

- Assess the situation and remove all unnecessary individuals from the area. Only essential personnel should be present.
- Appoint others to keep the area clear.
- Appoint a person or person(s) to stay with the individual(s) involved at all times. Instruct the volunteer(s) to not render any treatment beyond his/her training. Do not move an injured individual unless he/she is in immediate danger.
- Determine if medical support (on site or ambulance) needs to be contacted. If yes, do so immediately. Have athlete medical form ready for medical personnel.
- Determine if law enforcement needs to be contacted. If yes, determine whether 911 or the local non-emergency number should be used.
- If a family member/guardian/friend cannot accompany the athlete/volunteer to the hospital, either stay with the athlete or appoint someone to do so until a family member/guardian/friend can arrive.
- In the event of a serious incident or crisis, immediately contact John Corbett, CEO and/or Wendy Miller, Director of Sports and Training for Special Olympics West Virginia. Explain the situation. Special Olympics West Virginia Program will start coordinating any assistance needed. If you aren't sure if the incident qualifies as "serious," err on the side of contacting Special Olympics.
- You or your Local Program Coordinator should contact the appropriate family/guardian of athlete/volunteer to apprise them of the situation.
- Cooperate with medical personnel and/or law enforcement in completing any necessary paperwork.
- In the event of media presence, speak from the statement on your Crisis Communication plan and do not speculate or expand upon this statement. Refer all media calls to the Special Olympics West Virginia Program.
- Record names and phone numbers of individuals present at time of incident for use on Incident Report Form and for possible subsequent questions.
- Once incident/crisis is over and the athlete(s)/volunteer(s) involved have all been released to their own supervision or the supervision of others, call the Special Olympics West Virginia Program, the appropriate family/guardian of the



athlete(s)/volunteer(s), your Local Program Coordinator/Head of Delegation and apprise all of status.

- Complete an Incident Report Form and send to the Special Olympics West Virginia Program within 12 hours.



Inclement Weather Policies

Rain Policy

Decisions on field closures are made as late as possible in order to give the best possible chance for the game to be played.

Winter Weather Policy

Players are more susceptible to injuries during cold weather, particularly from pulled or torn muscles. Players should be encouraged to wear appropriate clothing to aid body heat retention, yet afford adequate movement without creating a safety hazard. As a general rule, training programs should follow their High School Activities Association policies for cancellations.

Hot Weather Policy

The risk of heat-related illness from vigorous sports activity increases with the temperature. The body generates heat, which cannot be dissipated readily when the ambient temperature exceeds 85°F, depending upon the humidity. Hot weather is considered at any point where the heat index reaches or exceeds 90°F. As a general rule, training programs should be reviewed if the heat index at the start of training is projected to be above 95°F. Coaches should exercise caution and provide additional water breaks.

Thunder & Lightning Policy

If inclement weather is forecasted, an individual should be designated to monitor the weather forecast and radar during the competition. If the facility being used for competition has a lightning detection system, and a facilities policy in place that is more stringent than described below, the facilities policy will supersede the Special Olympics policy.

If lightning is detected within eight miles of the practice or competition facility, all coaches, players, referees, and spectators are to withdraw from the field and seek proper shelter. No place outside is safe near thunderstorms. The best shelter is a large, fully enclosed, substantially constructed building. A vehicle with a solid metal roof and metal sides is a reasonable second choice.

30-minute Rule: Wait at least 30 minutes after the last sound of thunder or the last lightning flash before giving the “all clear” signal and resuming normal activity. If thunder is heard or lightning is seen again within that 30-minute time frame, the event will continue to be postponed or officials may deem to cancel the event.

